



Plan ahead and
book before you visit

Welcome to the Cotswolds

This browser is not a definitive guide to the Cotswolds but an introduction highlighting some of the many attractions on offer, from the well-known to undiscovered gems. Browse at your leisure, then venture out to explore and discover for yourself.

Contents

Welcome to the Cotswolds **2** Map **3** The Great Outdoors **4** Set Jetting **5**
Cotswold Towns **6-62** Cotswold Villages **63-69** Further Afield **70-75**

1

2

3

5

4

An Area of Outstanding Natural Beauty, the Cotswolds offers the best of rural England, with towns and villages of honey-coloured stone set amongst green rolling hills and glorious countryside.

The Cotswolds boasts a fantastic range of attractions providing entertainment and interest for visitors of all ages. There isn't the chance to list all the treasures waiting to be explored in a publication this size – picture postcard villages, medieval churches, places to eat and drink, and the many events and festivals that take place throughout the year.

Be sure to check before you visit to find out current opening times and booking information. The businesses listed in this browser will update websites and social media regularly, so keep in touch for updates.

The Cotswolds is the perfect destination to enjoy all year round, whatever the weather!

For further information and updates visit www.cotswolds.com

1 Explore the scenic National Trust Sherborne Park Estate

2 Rousham, one of Monty Don's favourite gardens

3 Cheltenham, the Festival Town

4 Stunning Cotswolds scenery all year round

5 Discover royal connections at Sudeley Castle





© Russell Burton

1

- 1 Get on your bike and head off on an adventure
- 2 Make time to explore villages and towns
- 3 Stride out and enjoy the views
- 4 Grab a paddle for a different view of the Cotswolds



2



3



4

Leave the car behind and discover the great outdoors

To really enjoy the Cotswolds, why not leave the car behind for a day and explore on foot or by bike? Moving at a gentler pace, you will be better able to enjoy the sights and sounds that make the area so special.

With over 5,000km of footpaths and bridleways this is a walker's paradise, with gently rolling hills, wooded valleys, riverside paths and pretty country lanes. Whether you are an ambler or a rambler, the choice of walks is extensive. Don't forget to stop and marvel at the stunning views!

One of the most beautiful stretches of the Thames Path runs through the Cotswolds, along with the dramatic Cotswold Way stretching over 100 miles from Chipping Campden to Bath, and the picturesque Oxfordshire Way from Bourton-on-the-Water towards Oxford.

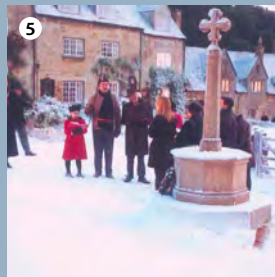
For a slightly faster pace there's nothing quite like the freedom offered by two wheels. Miles of quiet country lanes, bridleways galore and a selection of circular cycle routes provide opportunities for long or short rides, on and

off road. The gently rolling hills, characteristic of the Cotswolds, mean that uphill sections are usually short and satisfyingly rewarded by some freewheeling afterwards!

No mention of walking or cycling in the area would be complete without reference to the classic Cotswold inn. There are plenty of great country pubs conveniently dotted around the area, along with traditional tearooms, so you can take a well-earned refreshment break and sample some of our excellent local food and drink.

There are more than 50 free downloadable walks and a wide range of free downloadable cycle rides available, as well as the Cotswolds and Severn Vale 7 day circular cycling tour route.

For downloadable walks and rides visit www.cotswolds.com



- ❶ Cotswold Farm Park, the home of Adam Henson from BBC Countryfile
- ❷ Bath the location for Bridgeton
- ❸ Historic Berkeley Castle
- ❹ On set with Downton Abbey
- ❺ Snowhill as seen in the film Bridget Jones's Diary
- ❻ Chavenage House features in Poldark
- ❼ Chastleton House, one of the Cotswold settings for Wolf Hall
- ❽ Cogges Manor Farm used as a location in Downton Abbey

Set Jetting

Visit the locations of your favourite films and TV series.



Film producers are drawn to the Cotswolds for its picture-perfect towns and villages, country retreats and glorious countryside, which make fine settings for the best of British drama and international movies. Follow in the footsteps of the famous and you may be lucky enough to see a production being made when you visit!

Poldark

Come and see 'Trenwith', the Poldark family home, actually filmed at Chavenage House in Tetbury and you may spot Aiden Turner as Ross Poldark! Chavenage House is a wonderful Elizabethan house of mellow Cotswold stone which is often used as a location for TV and film productions. Famous stars who have graced the house include Oscar-winning Eddie Redmayne, Jamie Doran and the late Warren Clarke.

Bridgeton

Bath has a starring role in the series as much of the filming took place in the city, with the golden, Georgian stone and grand buildings used as a backdrop. From the cobbled and picturesque Abbey Green, which stood in for a market square in the series, to The Holburne Museum, which was Lady Danbury's grand mansion, and to Bath Street, the perfect Regency thoroughfare, follow in the footsteps of Daphne Bridgeton.

Lord Grantham comes to the Cotswolds

The Cotswold village of Bampton doubles as the fictional village of Downton in the hit drama series *Downton Abbey*. Many of the houses, church and pub exteriors are recognisable from the show. Cogges in Witney has also featured as Yew Tree Farm, and has a fascinating display showing how the farm buildings were transformed for the filming of the show, along with a video about the filming.

BBC Countryfile

The Cotswolds features regularly in *Countryfile*. Presenter Adam Henson's farm park is one of the Cotswolds' most popular attractions.

Picture Perfect Locations

Many Cotswold locations have been used for the filming of *Wolf Hall* including Chavenage House, Chastleton House, Berkeley Castle and Gloucester Cathedral, all superb Cotswold buildings. Gloucester Cathedral also features as a backdrop in *Mary Queen of Scots* and picture perfect Snowhill can be seen in the ever popular *Bridget Jones's Diary*.

For more information on these and other film locations visit www.cotswolds.com

Burford

With its high street sweeping downhill towards the River Windrush, its three-arched medieval bridge and its impressive church, both sides of the street flanked by an unbroken line of ancient houses, it's easy to see why Burford is one of Oxfordshire's most attractive towns.

Little has changed over the centuries, Burford is popular with visitors, both for its beauty and history, but also for its shopping, especially antiques, and for the wide variety of places to eat, with restaurants, pubs and tearooms. Here you can stay in a hotel frequented by King Charles and Nell Gwynn, eat where Nelson dined and visit England's oldest pharmacy, a chemists since 1734.

Half way down the hill, the 16th century Toley building, once the meeting place for medieval merchants, now houses The Toley Museum, a delightful, local museum illustrating the town's social and industrial past.

www.cotswolds.com/Burford



All images © Sophie Long: The Picture Taker: RJA Photography



Cotswold Wildlife Park & Gardens

Burford OX18 4JP

Tel 01993 823006

www.cotswoldwildlifepark.co.uk



Stroll around the Park and enjoy uninterrupted views of the animals. Watch rhinos graze on the Gothic Manor House lawns with only a ha-ha between you or get eye-to-eye with giraffe. Cotswold Wildlife Park is one of the largest zoological collections in the UK, with over 1,500 animals from 250 different species. Set in 120 acres of beautiful parkland and stunning gardens, there's plenty of space to relax and get closer to wildlife.

Wheelchair and pushchair friendly - Changing Places facilities - Dog-friendly - Restaurant and picnic areas - Gift Shop and kiosks - Adventure Playground - Children's Farmyard - Reptile House.



Crocodiles of the World

Brize Norton OX18 3NX

Tel 01993 846353

www.crocodilesoftheworld.co.uk

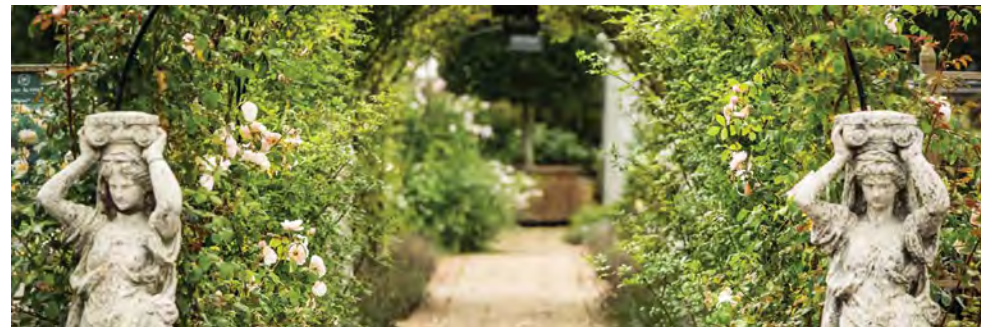


Just two minutes off the A40 between Witney and Burford is one of the Cotswolds' best kept secrets. Crocodiles of the World is the UK's only crocodile zoo and a unique all-weather attraction that brings visitors face-to-face with one of the world's most prehistoric predators.

Located in Brize Norton, Crocodiles of the World is dedicated to the conservation of crocodiles, and boasts one of the widest collections of crocodile species in the world.

Here you'll find American alligators, the much feared saltwater crocodile and critically endangered species such as Siamese crocodiles, and even a Komodo dragon.

With talks, feeds and animal encounters throughout the day there is plenty to keep visitors captivated, as well as an unforgettable opportunity to be photographed holding a baby alligator.



Burford Garden Company

Burford OX18 4PA

Tel 01993 823117

www.burford.co.uk



From its beginning as a plant nursery five decades ago, Burford Garden Company has grown to become one of the country's best independent retail experiences. *'Expect the unexpected'*, as one famous actor told us on their recent shopping visit. Spanning

some 15 acres, Burford Garden Company is synonymous with sourcing the 'hard-to-find'. It is beautifully curated, with stunning plants, stylish gardenalia, eclectic home interiors, cool boutique clothing and a burgeoning art gallery and reading room. Its acclaimed chef-led glasshouse cafés and kitchens are at the heart of the experience, complemented by the food hall area packed with local produce and exquisite food gifts.



St John the Baptist Church

Burford OX18 4RY

Tel 01993 823788

www.burfordchurch.org



The impressive St John the Baptist Church reflects the wool wealth of the town, and has many interesting memorials charting some of Burford's great families. Look out for some fascinating historic insights, such as the magnificent bale tombs and the graffiti on the font, which dates back to the Levellers movement in 1649 when mutineers were executed in the churchyard. The adjacent Warwick Hall has been redeveloped to provide a wonderful modern facility and café.



St Oswald's Church

Widford OX18 4DU

www.oxfordshirecotswolds.org/things-to-do/attractions/widford-st-oswalds-church-p457601

A tiny church on its own in the Windrush Valley. In 1904 it was found to have been built on the base of a Roman house or temple. Mainly 13th century it has remnants of an 11th century Saxon or Norman building, e.g. the dividing wall, a chevroned corbel and the plain rough font.

There are two areas of uncovered Roman mosaic and several 14th century wall paintings. The nave has early 19th century box pews. Nearby are the remains of the deserted medieval village.



Tolsey Museum

Burford OX18 4QU

www.tolseymuseumburford.org

The Museum was established in 1960 in the Tudor tolsey, or market house, on Burford High Street. Exhibits include the town maces, seals and corporation documents, as well as tools of local trades, including the making of bells, ropes, saddlery, clarinets, brewing, quarrying and clock-making. Other highlights include a collection of needlework samplers and a magnificent craftsman's doll's house, created by 80 locals in 1939 and furnished with a Regency interior.

Cheltenham

A wonderful mix of the traditional and the new, Cheltenham nestles against the Cotswolds as the perfect place to unwind and refresh your mind, body and soul. With over 25 festivals a year, an abundance of independent and much loved High Street shops, and incredible dining experiences from street food to Michelin starred fine dining, Cheltenham truly offers something for everyone.

Its location slap-bang in some of the most beautiful countryside in the UK means a cycle or walking day out in the Cotswolds is merely minutes away.

Take a look at www.visitcheltenham.com for where to stay, what to do and what's on during your stay. Follow us:

f /VisitCheltenham

🐦 @visitchelt

📷 @visitcheltenham



All images © Cheltenham Festivals; Mical Ludlow; Still Moving Media; Visit Cheltenham



Bacon Theatre

Cheltenham GL51 6EP
Tel 01242 258002
www.bacontheatre.co.uk
f t

The impressive Bacon Theatre, completed in 1991 and built to a very high standard, boasts excellent sightlines and state-of-the-art facilities. Today the 566-seat Bacon Theatre plays host to professional touring theatre, live music, dance, film and celebrity speakers, as well as an extensive range of productions by local talented youth and community groups and charities. From classical ballet, physical theatre, to fantastic live music.



The Brewery Quarter

Cheltenham GL50 4FA
Tel 01242 574378
www.thebreweryquarter.com
f t

The Brewery Quarter prides itself on being a 'one-stop shop where you can shop-dine-stay and play!' The Brewery Quarter has been an entertainment and leisure venue since the early 2000s and was revamped and reopened in 2017. Great for kids and adults, it is home to Mr Mulligan's indoor adventure golf, Escape Hunt, Hollywood Bowl, The Playfarm soft play, which offers laser tag parties, plus a 14-screen state-of-the-art recently refurbished Cineworld cinema - including three VIP screens, a multi-sensory 4DX screen and an IMAX screen.

The Bicycle Hub / Regency Cycle Trail

Cheltenham GL51 7AG
Tel 01242 231690
www.bicycle-hub.co.uk
f t

The Bicycle Hub offer a great selection of bikes for short or long-term rental; perfect for exploring the local spa town of Cheltenham and the nearby Cotswolds. The bicycle fleet ranges from adult bikes and tandems to children's bikes, tagalongs and even trailers for those budding cyclists. What's more they also stock electric bikes for those looking for an alternative mode of transport.



Cheltenham Playhouse

Cheltenham GL53 7HG
Tel 01242 522852
www.cheltplayhouse.org.uk
f t

The building was originally built in 1801 as a bath house which was later expanded into a spa and then converted into a theatre. The theatre itself has been established since 1945 and hosts a variety of plays, workshops and events throughout the year. Initially financed by the council, in 1957 local volunteers took over the running of the venue and it has been run by volunteers since then.



Curry and Colonels

Cheltenham
www.thecheltenhampromenaders.co.uk/#xl_Tours
f t i

Join this foodie tour with a reenactor guide, dressed as Captain Henry Skillicorne, the man who developed the first spa in Cheltenham, as he takes you on a promenade through Cheltenham, stopping to admire the beautiful buildings, glorious gardens and sites of many of its spas.

Hear stories about the people who visited and lived in the town and explore the town's unique connection with the East India Company and the British Raj. Then finish up with a delicious Indian meal.



Escape Rooms Cheltenham

www.escaperoomscheltenham.co.uk
f t i

Escape Rooms Cheltenham provides fun escape room challenges for teams of up to six players, who have to work together to solve all the puzzles in order to escape the room in under 60 minutes. The 'pop-up' rooms are changed every six months, so there is always a new challenge to enjoy. New in 2021 will be

a permanent room, with the same quality of puzzles as normal, but with the greater finesse that comes with a longer life span.



Dunkerton's Organic Cider Shop

Cheltenham GL52 6UT
Tel 01242 650147
www.dunkertonscider.co.uk
f t i

Dunkerton's Organic Cider Shop at Dowdeswell Park has become a real hit with the locals. The site includes a cider shop and bar, serving the award-winning Hereford cider. With an outdoor space to enjoy an al fresco drink, Dunkerton's also run events including live music alongside a food offering. Events should be booked in advance and can be found on their website.



Everyman Theatre

Cheltenham GL50 1HQ
Tel 01242 572573
www.everymantheatre.org.uk
f t i

The Everyman Theatre presents a wide range of productions, including ballet, opera, drama, dance, comedy, music events and a traditional family pantomime, as well as many community projects, education workshops and youth theatre sessions.

Whether you are going to the Everyman for a show, a workshop or even to dine or drink in the café, bar or restaurant, there is always a warm welcome.



Holst Birthplace Museum

Cheltenham GL52 2AY
Tel 01242 524846
www.holstmuseum.org.uk
f t

Step inside the Holst Birthplace Museum and see the piano Holst used to compose *The Planets*. Discover why he liked its 'light-touch'. Explore what life was like for his modest middle-class family through period interiors and objects. Imagine Cheltenham's Regency past in the only Regency room open to the public in the town, hung with paintings by the Gothic-Romantic artist Theodor von Holst. Picture yourself as a Victorian child as you play in the nursery. Lose yourself as you hear the first rumblings of Mars...



Nature in Art

Twigworth, Gloucester GL2 9PA
Tel 01452 731422
www.natureinart.org.uk
f t

Housed within a fine Georgian mansion you will find the widest range of nature inspired art in the world.

Our collection spans 1,500 years, 600 artists/makers, 60 countries and cultures and contains work in all mediums and styles. We also host a vibrant temporary exhibitions programme.

You can meet an artist at work in our studio and enjoy home-made treats in the coffee shop.



Jet Age Museum

Gloucester GL2 9QL
Tel 01452 260078
www.jetagemuseum.org
f t

The Jet Age Museum celebrates Gloucestershire's rich aviation heritage from the early days of flight, through the birth of the Jet Age to the present day. The museum is staffed only by volunteers, some of whom flew in the aircraft on display. Come and visit,

ask questions and learn about the history of aviation in Gloucestershire and beyond - including cockpits to sit in. We aim to preserve the past and inspire the future.

Free entry. Please check opening dates, times and attractions on the website.

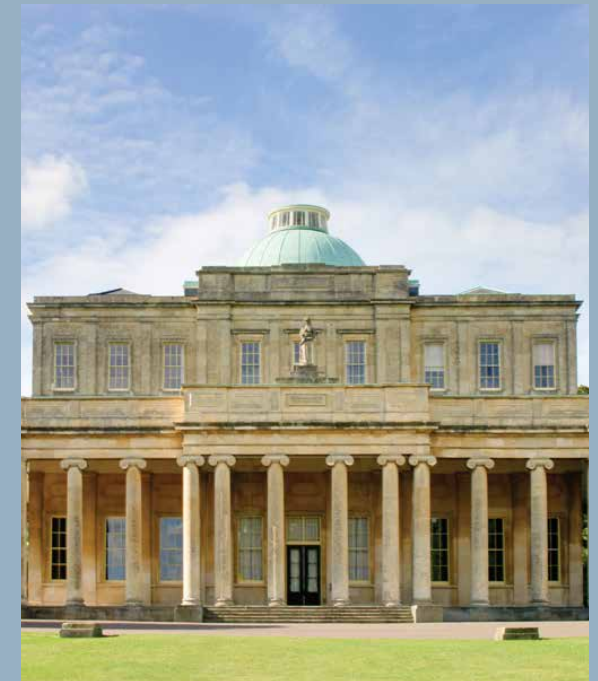
Pittville Pump Room

Cheltenham GL52 3JE
Tel 01242 528764
www.pittvillepumproom.org.uk
f t

A Grade I listed regency gem, the iconic pump room stands in regal splendour overlooking the sweeping lawns and lakes of Pittville Park. Available for heritage visits, community events and private hire, the pump room is a leading wedding venue.

Pittville Park, the largest ornamental park in Cheltenham, opened in 1825, and features a children's play area and aviaries, along with lakes, tennis courts, a pitch and putt golf course and skate park.

Refreshments are available from the Heritage Café at Pittville Pump Room.





Sandford Parks Lido

Cheltenham GL53 7PU
Tel 01242 524430
www.sandfordparkslido.org.uk
f t i

Sandford Parks Lido is one of the largest outdoor pools in the country, set in landscaped gardens within Sandford Park. The 50 metre main swimming pool as well as a children's pool and paddling pool are heated. Basketball, volleyball and table tennis are also available – all included in the entrance charge. Light refreshments are available at the poolside café.



Tour and Explore Cheltenham with Anne Bartlett

Tel 01242 584691
www.tourandexplore.com
t i

Discover the history and heritage of this attractive Regency spa town. Anne is an experienced, locally-based professional Blue Badge Tour Guide, providing a relaxed and friendly service for people visiting Cheltenham for leisure, for their holiday or on business. Anne strives to create a unique experience for each group. Her tour guiding service is flexible and itineraries can be tailored to include any specific attractions or interests the group has. Guided tours can be either walking tours around towns and villages or as coach tours.



Sibling Gin Distillery

Cheltenham GL52 6UY
Tel 07882 125969
www.siblingdistillery.com
f t i

This well-known Cheltenham gin was created by four siblings in 2014 and can now be found in bars and shops across the country. As well as a shop to purchase the gin, Sibling Gin Distillery also has a bookable tour available. The experience, which

lasts two hours, includes a tour of the distillery, a tasting, a light platter-style lunch and a chance to get educated on all things gin.

The Wilson Art Gallery and Museum

Cheltenham GL50 3JT
Tel 01242 528764
www.cheltenhammuseum.org.uk
f t

Offering diverse collections and exhibitions, visitors can explore highlights from the museum's collections including the internationally renowned Arts & Crafts collection, fine arts, social history and The Paper Store, the gallery's open archive, as well as the new community gallery and arts café.



Chipping Campden

With more than 200 listed buildings, Chipping Campden is one of the best-preserved towns in the Cotswolds and has an elegant, timeless quality. The delightful broad, sweeping high street with its unbroken terraces represents many architectural styles, from mellow Cotswold stone buildings to thatched cottages. The Market Hall, built in 1627 for the sale of butter, cheese and poultry, still stands proudly in the centre of the town, whilst many of the town's buildings are associated with the Arts and Crafts movement. Visit the Court Barn Museum, to find out the story of craft and design in the Cotswolds.

The town is packed with independent, specialist shops selling art, clothes, shoes, jewellery and gifts, as well as a diverse range of places to eat in. For wonderful views of the surrounding countryside, climb up nearby Dover's Hill, where in the 17th century Captain Robert Dover founded the Cotswold Olimpicks, a bizarre mix of sports, games and village festivities, which is still held annually.

www.cotswolds.com/ChippingCampden



All images © Emma Lathwood, The Picture Taker



Court Barn Museum

Chipping Campden GL55 6JE

Tel 01386 841951

www.courtbar.org.uk



Discover the stories and legacy of the craftspeople, designers and artists working in the north Cotswolds from 1900 to the present day, including C.R. Ashbee, Gordon Russell, Hart Silversmiths and Robert Welch.

In the spring of 1902 C.R. Ashbee, a significant figure behind the Arts and Crafts movement, moved with his Guildsmen to Chipping Campden. In total 50 Guildsmen and their families arrived that summer from the East End of London, along with their workshop equipment. Ashbee was a leading figure in the movement but for him it was not just about creating beautiful things, it was about giving people satisfying work.

This was the beginning of the story of craft and design in Chipping Campden.





Ernest Wilson Memorial Garden

Chipping Campden GL55 6JD

Tel 01386 841206

www.chippingcampdenonline.org/things-to-do/ernest-wilson-memorial-garden/

The Garden was originally part of the Old Vicarage Garden and is named after Ernest Wilson who was born in Chipping Campden in 1876. While working at the Royal Botanic Gardens at Kew he met famous nurserymen James Veitch and Sons who asked if he

would go plant hunting in China. This was the start of his many trips, not only to China but to Japan, Korea, Formosa and Taiwan. Over his many trips he discovered, and brought back, over 1,200 different plants including the ever popular Handkerchief Tree, many of the plants you see today in this garden include these species and are planted in his memory.



The Gallery at the Guild

Chipping Campden GL55 6DS

Tel 01386 840345

www.thegalleryattheguild.co.uk



In June 2005, a group of seven artists and makers held a two-week exhibition in the exhibition room at The Old Silk Mill in Chipping Campden. More than 15 years later the Gallery at the Guild is now a co-operative of 28 artists comprising painters,

ceramicists, furniture makers, glass makers, jewellers, photographers, print makers, sculptors and textile artists. Items for sale in the gallery change regularly so there's always something new to discover.



Hidcote Manor Garden

Hidcote Bartrim, Chipping Campden GL55 6LR

Tel 01386 439819

www.nationaltrust.org.uk/hidcote



Experience one of the country's great gardens.

Hidcote Garden is divided into a series of 'outdoor rooms', each with its own character. The formality of the 'rooms' melts away as you move through the garden away from the house. Lawrence Johnston created the garden at Hidcote and was passionate about plants. He placed enormous emphasis and expense on finding unusual varieties that would bring colour, scent, shape and texture to the garden.

He also travelled, visiting places like the Alps, South Africa and China and exchanged plants with gardeners in far-flung countries from Australia to Japan. He carefully selected only the finest varieties to bring back to Hidcote.

Over the years many plants have been named after Johnston or Hidcote - in recognition of his talent and plantsmanship.



Kiftsgate Court Gardens

Chipping Campden GL55 6LN
Tel 01386 438777

www.kiftsgate.co.uk



Perched on the edge of the Cotswolds with wonderful views to the west, the gardens at Kiftsgate reflect gardening through the 20th century.

The original gardens around the house are planted in colour themes separated by yew hedges. The sheltered lower gardens and pool were added to create a Mediterranean atmosphere and the contemporary water garden has recently been added.



Little Oak Vineyard

Chipping Campden GL55 6LA
Tel 01386 840079

www.littleoakvineyard.com



Little Oak Vineyard is a small, family-run business based in Chipping Campden producing high quality and award-winning wines and brandy. We offer vineyard tours and wine tastings all year and by prior arrangement we can also offer a lunch platter.

Chipping Norton

'Chippy', as it is affectionately known by locals, is a real, working Cotswold market town. Renowned for its antique shops and diverse shopping offer, including a regular market, the lively town centre is always bustling with shoppers and visitors. There is a good choice of places to eat and top quality entertainment at the wonderful theatre, famous for its pantomime and visiting world-class performers.

There is plenty of historical interest too, including the Grade I listed St Mary's Church, the impressive Bliss Mill (now luxury flats) and the grand Town Hall. Visit the small local museum on the first floor of the 19th century Chipping Norton Co-op Society Meeting Hall to learn about how Chipping Norton became such a thriving market town.

www.cotswolds.com/ChippingNorton



All images © Oxfordshire Council, The Picture Taker





Chastleton House

Chastleton, Moreton-in-Marsh GL56 0SU
Tel 01608 674355

www.nationaltrust.org.uk/chastleton-house



An intriguing Jacobean country house and garden set in the beautiful Oxfordshire countryside.

Built by Walter Jones as a statement of power and wealth, Chastleton House has remained largely unchanged for 400 years, leaving a fascinating time capsule to explore.

Churchill and Sarsden Heritage Centre

Churchill, near Chipping Norton OX7 6NA
Tel 01608 658603

www.churchillheritage.org.uk



'A little gem I didn't know existed!'

The building may be only 15' x 30' but its ancient walls contain state of the art technology, with touch screens telling the remarkable stories of two eminent sons of the village, Warren Hastings (1732-1818), first governor general of India, and William Smith (1769-1839), Father of English Geology.

There is also a wealth of archive material available. For information on our current exhibition please see our website.



Fairytale Farm

Southcombe, Chipping Norton OX7 5QH
Tel 01608 238014

www.fairytalefarm.co.uk



Fairytale Farm mixes classic fairy tales, animals and adventure play to create a sensory and learning wonderland for all the family.

Children will love Fairytale Farm. With our exciting adventure playground, an enchanted walk with a surprise around every corner and a chance to meet our amazing animals, there is so much to see and do.





Hook Norton Brewery

Hook Norton OX15 5NY

Tel 01608 730384

www.hooky.co.uk



Established in 1849, Hook Norton Brewery is a proudly independent family-owned, fifth generation brewery that brews a range of cask, keg and bottled ales. Visitor centre, brewery tours, shire horses, steam engine, museum, café and coffee shop.



The Rollright Stones

Little Rollright OX7 5QG

www.rollrightstones.co.uk



The Rollright Stones are a group of prehistoric megalithic monuments built from large natural boulders found within about 500m of the site. The stones are naturally pitted, giving them extraordinary shapes.

The complex consists of three main elements, The Kings Men stone circle, the King Stone and the Whispering Knights.



The Lido, Chipping Norton

Chipping Norton OX7 5BZ

Tel 01608 643188

www.chippylido.co.uk



Come on in, the water's lovely – whatever the weather!

Set in the Oxfordshire Cotswolds, The Lido has two fully-heated outdoor pools: a 25m swimming pool and a toddlers' paddling pool. It also has a café

and a large tree-lined lawn, making it perfect for an afternoon's outdoor fun.

With dedicated adult sessions and other regular activities, such as aquafit, synchro and Sunday morning yoga, it also provides for those clocking-up some serious lengths, boosting their fitness or simply looking for a place to relax.

Whether seeking sport, leisure or fun with friends, The Lido has something for everyone.



The Theatre Chipping Norton

Chipping Norton OX7 5NL

Tel 01608 642350

www.chippingnortontheatre.com



A theatre, an arthouse cinema, a gallery and a concert hall welcoming over 50,000 visitors annually. Throughout the year we offer a huge range of activities, arts and entertainment. Come and find out what we're all about.



TY Cycles

Chipping Norton OX7 5XW
Tel 01608 238150
www.tycycles.co.uk
f @

Hire a bike and explore the quintessential Cotswolds. With a great range of top quality hybrid bikes, electric bikes, road bikes and children's bikes, we've got you covered.

We cater for parties of all sizes, for as short or as long a duration as you require. If you're planning a leisurely day cycling in the Cotswolds, a cycling holiday or hen and stag parties, look no further!

Bikes are delivered and collected to your desired location or you can collect from our shop. If you're arriving by train we deliver to Moreton-in-Marsh, Kingham and Charlbury stations.



Cirencester

Cirencester, known as the 'Capital of the Cotswolds', is a lovely market town with a fascinating history. The town's Roman past can be discovered at the award-winning Corinium Museum – the stunning mosaics are a must-see! The medieval wool trade has shaped the modern town, with the impressive church of St John Baptist dominating the market place.

Cirencester is home to many specialist shops and boutiques, as well as a fascinating antique emporium. Enjoy exploring the meandering alleyways and historic streets, where you will find the town's best independent cafés and shops. Cirencester is also home to some fantastic markets, many of which are held in the atmospheric Corn Hall.

Arts and crafts lovers will enjoy the New Brewery Arts, which has changing exhibitions, artists' workshops, a café and shop, all housed in a converted brewery building. There are many open spaces dotted throughout the town, including the extensive 18th century Cirencester Park. In the evening enjoy a performance at the Barn Theatre after a drink or meal at one of the many fantastic pubs and restaurants in the town.

www.cotswolds.com/Cirencester





Abbey Home Farm

Cirencester GL7 5HF
Tel 01285 640441
www.theorganicfarmshop.co.uk
f t i

A 1,600 acre mixed organic farm with award-winning farm shop, café, cookery and short residential courses, educational visits, organic cotton textiles, yurts, green field campsite, Cotswold stone holiday cottages and farm trails. Throughout the year, walks and talks which reflect the seasons are held, from family farm walks to vegetable garden tours giving you the chance to learn more about how food is produced.

Why not explore further afield and hire an ebike from Cotswold eBikes who are based on the farm. Whether you just need a bike and a map to create your own adventure or would like a tailor-made tour of favourite local places, they can help.



Bibury Trout Farm

Bibury GL7 5NL
Tel 01285 740215
www.biburytroutfarm.co.uk
i

Founded in 1902, Bibury Trout Farm is England's oldest working trout farm situated in one of the most beautiful villages in the Cotswolds. 'Catch Your Own' fishery, playground, BBQs, café, gift shop and fish counter. Open daily.



The Butts Farm Rare Breeds and Farm Shop

Near South Cerney, Cirencester GL7 5QE
Tel 01285 869414
www.buttsfarmrarebreeds.co.uk
f t i

The Butts Farm Rare Breeds opened over 30 years ago. You can have fun joining in with the animal activities throughout the day. In addition to seeing lots of rare and traditional farm animals and feathered friends with their young, you can also enjoy our unusual Curly horses and beautiful Welsh mountain ponies with their foals. Then sit down, relax and enjoy a delicious Cotswold cream tea in our Farmyard Tea Room. The award-winning Farm Shop is dedicated to promoting the exceptional benefits of rare breed meat, home cured bacon and superb sausages.



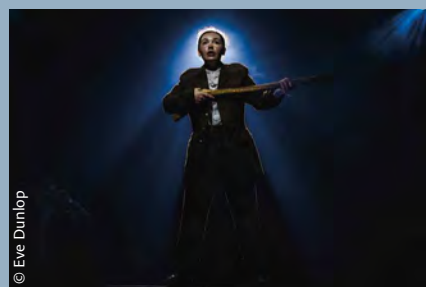
© Eve Dunlop

The Barn Theatre

Cirencester GL7 1BN
Tel 01285 648255
www.barntheatre.org.uk
f t i

The Barn Theatre is a 200 seat theatre based in Cirencester, the heart of the Cotswolds. The producing house received The Stage Awards' 2019 *Fringe Theatre of the Year Award* and are renowned for their unique *Built By Barn* productions, which include fresh, imaginative takes on classic plays and musicals alongside newly commissioned work from the best UK talent. The theatre, which has been heralded as the '*West End meets the West Country*', aims to be a leading force in the theatre industry and to help discover and develop emerging new talent.

Téatro, which is adjacent, is the perfect place for a pre-theatre meal or cocktail.



© Eve Dunlop



© Eve Dunlop



Cerney House Gardens

North Cerney, Cirencester GL7 7BX
Tel 01285 831300
www.cerneygardens.com
f t i

Cerney House Gardens is a romantic English garden for all seasons. There is a beautiful secluded Victorian walled garden which features herbaceous borders overflowing with colour. The informal planting in combination with our beautiful setting gives a unique and charming atmosphere. Early in the year we have a wonderful display of snowdrops, in spring we feature a magnificent display of tulips and during the summer the rambling romantic roses come to life. Enjoy our woodland walk and extended nature trail. New for 2021 the Potting Shed shop selling plants.



Cirencester Markets

Cirencester
www.cirencester.gov.uk/markets
f t i

Cirencester's spacious, centrally located Market Place is the perfect setting for regular, speciality and themed markets throughout the year.

Cirencester's historic Charter Markets are held every Monday and Friday they feature an array of stalls which include fresh food, plants, local produce,

crafts, luxury items, quirky keepsakes and much more.

The Farmers' Market takes place on the 2nd and 4th Saturday of each month. This market proudly showcases local produce and goods and all traders are within a 30 mile radius of the town.

A monthly Arts & Crafts Market is held on the 1st Saturday of each month between March and December, providing local artists and makers an opportunity to sell directly to the public.



Cirencester Open Air Swimming Pool

Cirencester GL7 2EF
Tel 01285 653947
www.cirenopenair.org.uk
f t i

Located on the edge of Cirencester Park, the pool is open seven days a week to the public from mid-May to mid-September.

The open air pool has a 28-metre heated main pool with slide, separate children's paddling pool and

sunbathing patio with a small 'tuck shop' serving hot and cold refreshments. Picnics welcome.

There are sessions to cater for everyone including fitness, general and family swim sessions, as well as aqua aerobics and inclusive sessions for people with specific requirements.

Please check the website for more information.



Cirencester Park

Cirencester GL7 2EF
Tel 01285 653135
www.bathurstestate.co.uk
f t i

Originally laid out as a deer park in the 1700s, Cirencester Park is a short walk from the town centre and is a wonderful place to appreciate the outdoors. Parking is limited on Cecily Hill but there are a number of public car parks in the town itself.

A leaflet for dog-friendly walking routes in the Park is available to download from the website and visitors are able to watch polo and cricket as well as enjoying a coffee from 'Beano'. There are also a range of events held in the Park – please visit the Estate website for dates and more information.

Cotswold Country Park & Beach

Shorncliffe, Near Cirencester GL7 6DF
Tel 01285 868096
www.cotswoldcountryparkandbeach.com
f i

Home of the largest inland paddling beach in the UK! With a range of activities on site including kayaking, SUP, aquaventure pods and open water swimming, it's the perfect day out time after time. If that's too energetic just sit back and relax on the sandy beach beside the beautiful swimming lagoon.



Cotswold Driving Experiences

Down Ampney, Cirencester GL7 5QF
Tel 01793 752281
www.cotswolddrivingexperiences.co.uk
f t i

Gloucestershire Rally School and Cotswold Off-Road have joined forces to offer you award-winning rally and 4x4 off-road driving experiences to petrol heads aged from just 10+.

No experience necessary as full tuition is given by highly experienced instructors.

Located in the heart of the Cotswold Water Park. Groups welcomed and gift vouchers available for all courses.

Established in 1994.





Corinium Museum

Cirencester GL7 2BX
Tel 01285 655611
www.coriniummuseum.org
f t i

Leave the 21st century behind you and discover the archaeology of the Cotswolds as you explore its history at this award-winning museum. Home to one of the largest collections of Romano-British antiquities extensively from Roman Cirencester, known as Corinium, Roman Britain's second largest city.

Be amazed by the work of prehistoric metalsmiths in our brand new pre-history galleries. Marvel at the Roman mosaics. Peek through the window of a Roman town house. Come face to face with the Anglo-Saxons and their buried treasures. Admire our medieval sculpture, Civil War coin hoards and the elegance of Victorian Cirencester. Every object has a story to tell. An inspiring and interactive experience for everyone. Special events and exhibitions take place throughout the year; check out the museum's website for details.



Cotswold eBikes

Cirencester GL7 5HF
Tel 07367 182402
www.cotswoldebikes.co.uk
f i

Born out of a love of cycling and the great outdoors, Cotswold eBikes was started in 2019 to provide quality electric bike rental and tours of the Cotswolds. We are based at Abbey Home Farm, a 1,600 acre mixed organic farm in Cirencester, and are in easy

reach of Bibury and its surrounding villages to the east, and the Stroud valleys to the west. Whether you just need a bike and a map to create your own adventure or would like us to build a tailor-made tour of our favourite places, we can help.



Cotswold Sculpture Park

Somerford Keynes GL7 6FE
Tel 07927 028558
www.cotswoldsculpturepark.co.uk
f i

The Cotswold Sculpture Park is home to 'Elemental', a collection of exciting sculptures displayed outdoors. It sits on a ten-acre site which has been transformed into a mixed deciduous and conifer woodland with ponds, gardens and glades. Joining these diverse spaces are meandering paths that take you on a creative journey. All sculptures are available to purchase.

Cotswold Water Park

South Cerney GL7 5TL
www.waterpark.org



The Cotswold Water Park is a unique destination in the Cotswolds – with something for everyone, whether you are a thrill seeker, a birdwatcher or a walker.

From watersports to walking, cycling to rally driving, birdwatching to an inland beach, the range of activities in this one area is breathtaking. Pick up a free leisure map at the Gateway Café and Information Centre to decide what to do where, or check out the website www.waterpark.org



The Garden at Miserden

Miserden, Near Stroud GL6 7JA
Tel 01285 821303

www.miserden.org



This lovely, timeless garden designed in the 17th century has a wonderful sense of peace and tranquillity with magnificent long mixed borders, a topiary yew walk and grass steps designed by Lutyens, as well as stunning views over the Golden Valley.

After exploring the garden, a recent winner of Historic Houses Garden of the Year, visit the nursery and café or venture on one of the walks around the Miserden Estate.



Foodworks

Colesbourne Park, Cheltenham GL53 9NP
Tel 01242 870538

www.foodworkscookeryschool.co.uk



The Foodworks is a state-of-the-art, purpose-built cookery school in Gloucestershire, located only 10 minutes from both Cheltenham and Cirencester, on the magnificent Colesbourne Park Estate in the heart of the Cotswolds.

Foodworks offer a wide range of courses designed to inspire everyone from beginners to experienced cooks and using only the freshest and finest seasonal ingredients.



Head 4 Heights

Ashton Keynes, Cirencester GL7 6DF
Tel 01285 770007

www.head4heights.net



For those with a Head 4 Heights, we offer an exhilarating range of climbing, jumping and swinging activities.

Open to the public and for all group bookings including school, youth group, stag, hen, birthday and corporate programmes.

Free admission to the Cotswold Country Park & Beach for all advanced bookings. For 5 years and upwards.



New Brewery Arts

Cirencester GL7 1JH
Tel 01285 657181
www.newbreweryarts.org.uk
f t

New Brewery Arts connects people with the handmade, promotes the joy and fulfilment of making and celebrates the role of craft and creativity in all our lives.

Come and explore your creativity through exhibitions, events and classes, see craftspeople at work in our studios or browse our shop with its carefully selected range of British crafts.

Join us for coffee or lunch in our café, and you can stay overnight in The Barrel Store, our stylish hostel in central Cirencester that breaks the mould of what you'd expect from a hostel.



South Cerney Outdoor Centre

South Cerney GL7 5TL
Tel 01285 860388
www.southcerneyoutdoor.co.uk
f t

We're all about reconnecting people with the outdoors, themselves and each other. As a Royal Yachting Association and British Canoeing training centre South Cerney Outdoors offers excellent facilities and resources by a 47-acre lake of crystal clear water.

We have so much to offer the whole family, from boat and board hire, water sports courses, private lessons, party packages and tasty refreshments in our lakeside Lodge Café.

Poulton Hill Estate

Poulton, Near Cirencester GL7 5JA
Tel 01285 850257
www.poultonhillestate.co.uk
f t i

Poulton Hill Estate is a small family-run vineyard in the Cotswolds producing limited batches of wine from grapes harvested by hand.

The 8,800 vines have been planted on the warm and sunny south-facing slopes of the vineyard and they can produce up to 20,000 bottles of wine a year. Why not find out more by booking a tour and tasting?



St John Baptist Church

Cirencester GL7 2NX
Tel 01285 659317
www.cirenparish.co.uk

St John Baptist is one of the largest parish churches in England and has been a place of Christian worship for well over a thousand years. A warm welcome is extended to all visitors and there are short written guides available in most commonly spoken languages. Guided tours, led by members of the church, are also available on certain days of the week.



Fairford & Lechlade

Fairford sits on a lovely stretch of the River Coln and was once an important coaching town on the old London to Gloucester route. The historic inns and hotels that fill the town are testament to its coaching history.

Don't miss the town's impressive wool church, St Mary's, with its complete set of 28 medieval stained glass windows. You can also follow a short heritage walk around the town and learn about its history.

www.cotswolds.com/Fairford

The delightful, dog-friendly town of Lechlade-on-Thames lies in an Area of Outstanding Natural Beauty on the River Thames. Enjoy a boat trip, take a stroll across the pretty Halfpenny Bridge or explore the Thames Path National Trail from the town. The Church of St Lawrence, which dominates the market square, has beautiful stained glass windows and a landmark spire. In the churchyard, the poet Shelley was inspired to write *A Summer Evening Churchyard* – look out for the verse inscribed by the church entrance.

Lechlade has a thriving town centre with a good selection of shops, including many antique-dealers, and regular markets. You will also find an array of wonderful places to eat and drink. The town lies within the Cotswold Water Park, where you can find a fantastic range of water-based activities to enjoy.

www.cotswolds.com/Lechlade



Lechlade



Lechlade



Fairford



Fairford



Lechlade



Buscot Park

Buscot, Faringdon SN7 8BU

Tel 01367 240932

www.nationaltrust.org.uk/buscot-park



Set in enchanting landscaped grounds with a splendid water garden, Buscot Park is the family home of Lord Faringdon, who continues to care for the 18th century house, as well as the family art collection, the Faringdon Collection.



The Cookery School at Thyme

Southrop, Lechlade GL7 3NX

Tel 01367 850174

www.thyme.co.uk/the-cookery-school



Thyme's founding ingredient, the Cookery School showcases its 'love of the land' and offers a welcoming environment to learn and nurture skills. Classes often start in the kitchen garden, showing guests how the produce is grown before harvesting

for their menu, and cooking under the guidance of the Thyme chefs.

We are led by the seasons focussing on what is best to buy, cook and eat right now and as every month is different in our kitchen garden, no two classes are the same.

We also offer private classes for fun parties!

Cotswold Woollen Weavers

Filkins, Lechlade GL7 3JJ

Tel 01367 860660

www.cotswoldwoollenweavers.co.uk



Wool heritage made the Cotswolds, and today we draw our inspiration from the soft colours of the Cotswold landscape all around us.

Visit the only textile design studios in the Cotswolds with our range of fabulous cloth, based on tradition but with a contemporary twist. And then there's... furniture and interiors, textiles, art, pottery, sculpture, and an eclectic mixture, both new and vintage, in our Explorium. We have a licensed coffee shop for light lunches and an orchard picnic area. You can hire bicycles and explore the tranquil Cotswold surrounds.



Lechlade Craft Barn

Lechlade GL7 3AY

Tel 01367 253586

www.lecladecraftbarn.com



Craft in the Cotswolds - what's not to love? Launched in 2014, Lechlade Craft Barn offers an array of affordable, fun and relaxed workshops throughout the year. From needle felting, mosaic making or lampshade making, unleash your creative side and join us for a workshop or two.





Kelmscott Manor

Kelmscott, Near Lechlade GL7 3HJ
Tel 01367 252486

www.sal.org.uk/kelmscottmanor



'The loveliest haunt of ancient peace...'

Kelmscott Manor was the country home of William Morris – poet, craftsman, socialist and Father of the Arts & Crafts movement – from 1871 until his death in 1896. The house contains a collection of possessions and works of Morris, his family and associates. William Morris called Kelmscott 'a heaven on earth'. His delight in its discovery can still be felt by visitors today. The landscape with its barns, dovecote, stream, meadows and formal gardens was a constant source of inspiration for Morris and the flora and fauna of the surrounding area are reflected in his designs.

In 2021, Kelmscott Manor received National Lottery Heritage Funding for conservation and improvement work. Please visit our website for details.



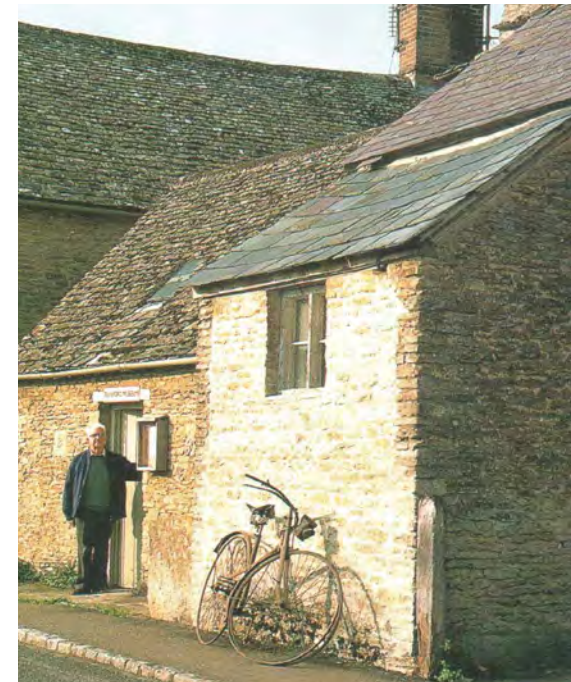
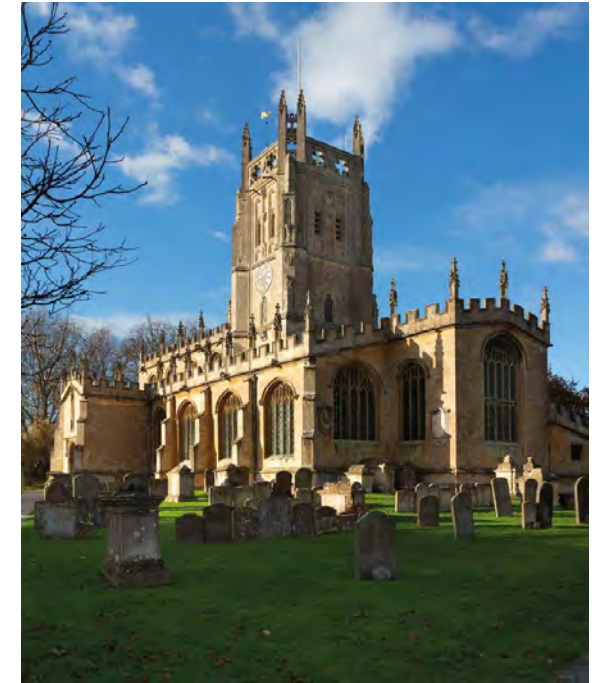
St Mary's Church

Fairford GL7 4AF

www.stmarychurchfairford.org.uk



There has been a church on this site for 1,000 years, the present one dating from around 1497. The church, as well as being the largest place of worship in the town, is renowned for its stunning stained glass windows – the only complete set of late medieval glass in a parish church in the country. Enjoy yourself trying to work out why a particular episode or character has been included in the window scenes and what their position might tell you. For example, why is the prophet David facing the apostle James the Great?



Swinford Museum

Filkins GL7 3JQ

www.filkins.org.uk

One of Oxfordshire's oldest small, rural museums, it was originally set up by George Swinford in the 1930s. Housed in a 17th century cottage this collection of tools and artefacts relates to domestic life and rural trades and crafts that are particular to this Cotswold village.

Malmesbury

Located in the southern Cotswolds and surrounded on three sides by water, England's oldest borough is quite simply a delight.

The charming honey-stoned high street is full to bursting with an array of independent retailers and eateries, all nestling in the shadow of the stunning 12th century Abbey. It's also home to well-known music, history, arts and gardens events & festivals, as well as a weekly farmers' and artisan market.

For a different perspective of the town meander along the beautiful River Avon and Conygre Mead Nature Reserve; discover more about the first King of England in the Athelstan Museum and admire the 15th century market cross before enjoying a night in the oldest hotel in England – The Old Bell.

www.cotswolds.com/Malmesbury



All images © Stephen Shepherd



Abbey House Gardens

Malmesbury SN16 9AS

Tel 01666 827650

www.abbeyhousegardens.co.uk



Described by visitors as one of the most beautiful gardens in the world, the gardens offer a sanctuary of peace in the heart of the oldest borough in England. Abbey House Gardens is famous worldwide, Alan Titchmarsh was right to say, *'The WOW factor is here in abundance.'*



Vintage Classics

Melksham

Tel 01225 703377

www.vintage-classics.co.uk



Self-drive classic car hire. E-Type and MKII Jaguars, Austin Healey, Aston Martin, Alfa Romeos GTV & Spider, Audi ur quattro, MGC, Morris Minor, Triumph Stag and, our latest addition, a Morris Mini Cooper S. Explore the Cotswolds whilst driving the car of your

dreams. Tours available in every car. One week prior booking essential.

For all enquiries please contact us at info@vintage-classics.co.uk

Moreton-in-Marsh

Located at the head of the beautiful Evenlode Valley, Moreton is a thriving market town dating back over 1,000 years. It has excellent transport links, with a station on the Cotswolds Line to London and local bus links to nearby towns. The attractive, wide high street is lined with elegant Cotswold stone buildings housing specialist shops, antiques emporiums, tearooms and inns.

Redesdale Hall, the town's main public hall, often holds antiques and craft fairs. Look out for the rare Curfew Tower with its original clock and bell from 1633. Also of historical interest is the White Hart Royal Hotel, a former manor house in which King Charles I sheltered during the Civil War. Fans of JRR Tolkien's work will also discover the inspiration for both the Prancing Pony (The Bell Inn) and Three Farthing Stone (The Four Shires Stone, just outside the town).

Every Tuesday, Moreton holds the largest open-air street market in the Cotswolds, with a charter originally granted by Charles I.

www.cotswolds.com/Moreton



All images © Emma Lathwood



Batsford Arboretum and Garden Centre

Batsford, Moreton-in-Marsh GL56 9AT

Tel 01386 701441

www.batsarb.co.uk



Just a mile from the historic market town of Moreton-in-Marsh, Batsford is home to one of the country's largest private tree collections with 56 acres of wild gardens, paths and streams, stunning views and beautiful statues.

Enjoy early colour from snowdrops, spring-flowering bulbs and Japanese flowering cherries; escape the heat under the tree canopy in summer and prepare to be amazed by the outstanding autumn colour! Browse the walled garden plant centre, garden and gift shops, join us for one of our lovely events or soak up the sunshine from the deck of the Garden Terrace Café where we serve fabulous cakes, afternoon teas and home-baked lunches. A great day out for all the family – dog-friendly too!





Bainton Bikes

Moreton-in-Marsh
Tel 01865 311610
www.baintonbikes.com
f t i

Bainton Bikes provide cycle hire and unique guided or self-guided cycling tours at numerous locations across the Cotswolds and Oxford.

Cycle hire is available from different hubs across the Cotswolds, where bikes can be rented self-service

24/7. Bikes can be rented from one location and left at another. To view availability, prices or to rent a bike download the 'Donkey Republic App' onto your phone.

Cycling tours start in various Cotswold towns and villages, we also have cycling holidays lasting three to seven days available. For more information about cycling tours check out our website or email us.

Self-guided tours are also available for numerous locations, helping to reach hidden gems throughout the beautiful Cotswolds area.



Cotswold Falconry Centre

Moreton-in-Marsh GL56 9AT
Tel 01386 701043
www.cotswold-falconry.co.uk
f i

Cotswold Falconry invites you to view spectacular demonstrations featuring a large variety of free-flying birds of prey. Find out about the ancient art of falconry and how it's skills are used to show the birds' natural behaviour. Experience the falcon stooping, the silent flight of the owl, the quick dash of the hawk and much more including eagles and vultures. Take a walk around our many breeding aviaries.

In addition to the daily displays the centre also runs a number of experience opportunities.



Bourton House Garden

Bourton-on-the-Hill GL56 9AE
Tel 01386 700754
www.bourtonhouse.com
f i

Just two miles from Moreton-in-Marsh, Bourton House Garden is an award-winning three acre garden featuring imaginative topiary, magnificent herbaceous borders, unique Shade House and several water features, including a raised Basket Pond from the Great Exhibition of 1851. Imaginative and dramatic planting schemes are a signature feature of the garden and include many rare, unusual and exotic plants, giving the 'wow' factor in abundance.

Beautiful at any time of year, the garden is absolutely glorious in the summer and early autumn.

Light refreshments and delicious home-made cakes can be enjoyed May to September in the Grade I listed 16th century Tithe Barn, where you will also find a shop selling gifts, cards and vintage collectables.



Cotswolds Distillery

Stourton, Shipston-on-Stour CV36 5EX

Tel 01608 238533

www.cotswoldsdistillery.com



The Cotswolds Distillery is the first ever full-scale distillery in the beautiful Cotswolds AONB. Founded in 2014, the distillery produces a range of truly Outstanding Natural Spirits, including single malt whiskies, gins and liqueurs – some of which are exclusive to their distillery shop.

Take a tour and discover how their spirits are made – then taste them for yourself. Now rated as one of the best visitor attractions in the Cotswolds, the award-winning Cotswolds Distillery Tour & Tasting sessions take place three times a day, seven days a week (bookable in advance by visiting their website). Whisky and Gin Blending Masterclasses are also available. After experiencing traditional distilling in the heart of the Cotswolds, you can enjoy a bite to eat in their beautiful café or browse their tempting shop and take a taste of the Cotswolds home with you.



Cotswolds Guided Tours

Minibus tours: Moreton-in-Marsh railway station

Walking tours: Various starting points

Tel 01608 654445 / 07756 513150

www.cotswoldsguidedtours.co.uk



Cotswolds Guided Tours is run by Lucy and Richard; your local, fun and friendly guides.

This award-winning business specialises in small minibus tours with a maximum of seven guests.

Our *Famous Cotswolds Tour* range visits the much loved locations along with a selection of hidden gems. Lucy and Richard will bring the area to life with quirky history and unusual facts. Six hour minibus tours are priced at £55 per person.

If you would love to stretch your legs, why not book onto a guided walking tour with us. A truly wonderful way to relax and enjoy all the beautiful villages, country lanes and fabulous footpaths. Circular walks range from two to five miles and are priced at £10 per person. Learn more about this stunning region that we are lucky enough to call home.



Go Cotswolds

Tours depart from: Moreton-in-Marsh railway station, Chipping Campden and Stratford-upon-Avon
Tel 07786 920166

www.gocotswolds.co.uk



Go Cotswolds provides award-winning minibus day tours of the Cotswolds from £45pp.

Choose from three different tours: *The Cotswolds in a Day*, *Cotswolds Trails & Villages*, or *Brewery*,

Pub Lunch & The Cotswolds and join a local driver-guide for a full day exploring the Cotswolds. Private tours and minibus private hire are also available.

Tours operate throughout the year and every day of the week during peak times (May to September). It's a convenient day trip for those staying in the area or travelling from London, Oxford or further afield in a day. Visit www.gocotswolds.co.uk for further information and to book tickets.



The Scenic Supper

Near Moreton-in-Marsh GL56 9PQ

Tel 07539 834982

www.thescenicsupper.co.uk



Discover a new kind of dining experience nestled in the Cotswold hills, The Scenic Supper awaits. Intimate dining with breath-taking views and the best gin bar around!

The Scenic Supper offers a pre-selected tasting menu alongside a gin bar ready to serve a variety of crafted cocktails, local wine, beer and cider throughout the evening.



Sezincote House & Gardens

Near Moreton-in-Marsh GL56 9AW

Tel 01386 700444

www.sezincote.co.uk



Nothing quite prepares you for Sezincote. After winding along the long drive you see a weathered-copper onion dome straight out of India. The gardens were restored in 1968 including the canals and Irish yews in the South Garden, evocative of Moghul

paradise gardens, a curving conservatory and little pavilion also in Indian style, and all the exceptionally fine planting of the water garden where many rare plants can be seen.

For any enquiries please contact us at enquiries@sezincote.com



Secret Cottage Tours

Collection from:

Moreton-in-Marsh railway station

Tel 01608 674700

www.cotswoldtourismtours.co.uk



You're invited inside my private thatched family home during your six hour tour of the Cotswolds, for a traditional English cream tea. Whether you're looking for a great day trip from London or Oxford, are staying here on holiday or just a local who wants to explore more of the area, our Secret Cottage Cotswolds Guided Tours will exceed your expectations. You can take the tour on your own, as a couple, or a group, with a maximum of eight seats.



Wellington Aviation Museum

Moreton-in-Marsh GL56 0HB

www.wellingtonaviation.org



Within part of an old Victorian school building is a treasure trove of RAF memorabilia and aviation art. The extensive private collection was the result of one man's passion and pride at having served in the Royal Air Force. It has become an invaluable record of how the Second World War impacted upon a

small market town. The museum celebrates the design and engineering advancements at the time and commemorates all those who served in the Royal Air Force.

Northleach

Nestled in the countryside, Northleach is an ancient market town rich in history and architectural interest. It owes much of its prosperity to the wool trade, evident in the half-timbered buildings dating back to the 15th century, as well as the impressive church of St Peter and St Paul. Known as the 'Cathedral of the Cotswolds', the church is a fine example of 15th century Cotswold perpendicular, with some of the best wool merchants' brasses in the country.

The market place has changed little since the 16th century and provides a centrepiece for lovely independent shops, selling everything from fresh bread and cakes to specialist wines, meat and cheeses. The town boasts a great choice of accommodation, to suit all budgets and tastes, and there's plenty of cafés and restaurants to enjoy.

Don't miss The Old Prison, an 18th century correction house which includes a café and the Lloyd Baker Wagon Collection.

www.cotswolds.com/Northleach



Adam Henson's Cotswold Farm Park

Guiting Power, Cheltenham GL54 5FL

Tel 01451 850307

www.cotswoldfarmpark.co.uk



Established in 1971 and the home of rare breed conservation, Cotswold Farm Park offers a fun-filled day out. Visitors can interact closely with the animals in the barns, as well as enjoying the wildlife walk, a number of outdoor play areas, jumping pillows and a tractor trailer ride around the park.



Chedworth Roman Villa

Yanworth, near Cheltenham GL54 3LJ
Tel 01242 890256

www.nationaltrust.org.uk/chedworth



Chedworth Roman Villa was rediscovered by the Victorians over 150 years ago. Leading the way in archaeology and conservation, Chedworth provides a unique insight into life during the Roman period in Britain. A modern conservation building provides exceptional access to the extensive mosaic floors, hypocaust systems and bath house rooms. A small museum houses a range of finds and artifacts from the villa.

Please visit the website before visiting to book your tickets.



Far Peak Climbing

Northleach GL54 3AP
Tel 01285 700370
www.farpeakclimbing.co.uk



Start your adventure at Far Peak, home of the Cotswold climbing and adventure centre.

We have a dedicated indoor and outdoor climbing centre, with a 15m climbing tower, woodland adventure course, artificial caving and kids zone,

café and campsite. You can enjoy our on-site activities including archery and bushcraft, hire a bike to explore further afield or simply relax with a drink in our superb bar and entertainment venue, The Old Smokery, and watch the world go by.

Lesson and taster sessions available for ages 3+ and sessions can be booked via the website.



Cotswolds Radio

Northleach GL54 3JH
Tel 01451 861055
www.cotswoldsradio.com



Have you ever wanted to be a DJ - create and present your own live show on radio? Well if so, this one is for you! A live broadcasting experience at Cotswolds Radio's very own studio. We will guide you through the creation of your show and set you up to broadcast live to the Cotswolds (and the world) on a date and time to suit you. Your show will also be recorded for you to keep forever.

Looking for a unique birthday or anniversary gift? Create your own playlist and pre-record your personal messages to someone special. We will create your *Thinking of You* show and broadcast it on a date and time of your choice. A lovely surprise gift for someone.



Lodge Park & Sherborne Park Estate

Aldsworth, Cheltenham GL54 3PP
Tel 01451 844130
www.nationaltrust.org.uk/lodgepark



Lodge Park is a rare surviving 17th century grandstand complete with mile long deer-course surrounded by Charles Bridgeman designed parkland. Set within the tranquil Sherborne Park Estate for walks through the woodland and watermeadows. Lodge Park is open on selected dates for pre-booked tickets only. Please visit the website for more information and availability.

The Old Prison Kitchen & Café

Northleach GL54 3JH
Tel 01451 860339
www.theoldprison.co.uk
f i

This historic House of Correction has been transformed into a beautiful Cotswold kitchen café serving artisan coffees, brunch classics, home-made cakes, lunchtime specials and afternoon teas, all made with locally sourced ingredients to deliver great taste, great quality and great value.

Complimentary access is available to the original Prison Cells and Court Room and the fully enclosed garden houses the Lloyd Baker Wagon Collection for all to enjoy.

Wheelchair access to café only. Ample free parking available.



QuadQuest

Notgrove GL54 3BS
Tel 01451 885150
www.quadquest.co.uk
f t i

In the heart of the picturesque Cotswolds we are delighted to invite you to try our Electric Quad Biking Ramble. Our track is situated in a beautifully located farm which guarantees an experience like no other. Our instructor will take you for a few miles' ride, with twists, turns, humps, bumps and ditches, guaranteeing you won't get bored! We aim to give you a mixture of countryside delight and an adrenaline rush that puts a big smile on your face!



Painswick

Surrounded by beautiful countryside and set in an Area of Outstanding Natural Beauty, Painswick lies at the mid-point of the Cotswold Way National Trail. Just a short walk from the town, Painswick Beacon provides excellent views across the Severn Vale towards the Malvern Hills and even Wales.

Many of the buildings are made from locally quarried stone and the lovely church of St Mary's is surrounded by 99 yew trees. (Legend has it that the Devil won't let a hundredth tree grow!) Explore the narrow streets and historic buildings, including 15th century New Street, built at the height of the wool trade, home to the Falcon Inn and the country's oldest bowling green.

Painswick is one of the finest and best-preserved Cotswold wool towns and is known for its specialist craft and antiques shops, and vibrant festivals. In the town there is a variety of small galleries, shops, cafés, restaurants and places to stay, and the Rococo Garden, now the country's only complete rococo garden, is nearby.

www.cotswolds.com/Painswick





417 Bike Park

Crickley Hill, Witcombe
Gloucester GL3 4UF
Tel 01452 864036

www.417bikepark.co.uk



417 Bike Park is a mountain biking haven suitable for all abilities. Whatever kind of riding you're in to we have it here. Facilities include downhill tracks, uplift service, 4 x track, dual slalom, dirt jumps and indoor pump track. We can also offer bike hire, Saturday kids/teen clubs, kids/teen holiday club and 1-2-1 coaching.



Cotswold Photography Tours

Photography tours around the Cotswolds
www.cotswoldphotographytours.co.uk



Welcome to Cotswold Photography Tours! Run by Andrew and Ann Moseley-Packer, we are based in the heart of the Cotswolds and offer bespoke individual and small group photographic tours of the Cotswolds. Learn more about photography and develop your photographic skills as we take you around some of

the best countryside the UK has to offer! No prior photographic experience is needed, nor do you need a fancy camera to enjoy your time out in the Cotswolds with us. We show you how to use the camera you have to obtain images that will stand out well above those usual tourist snaps of the place!

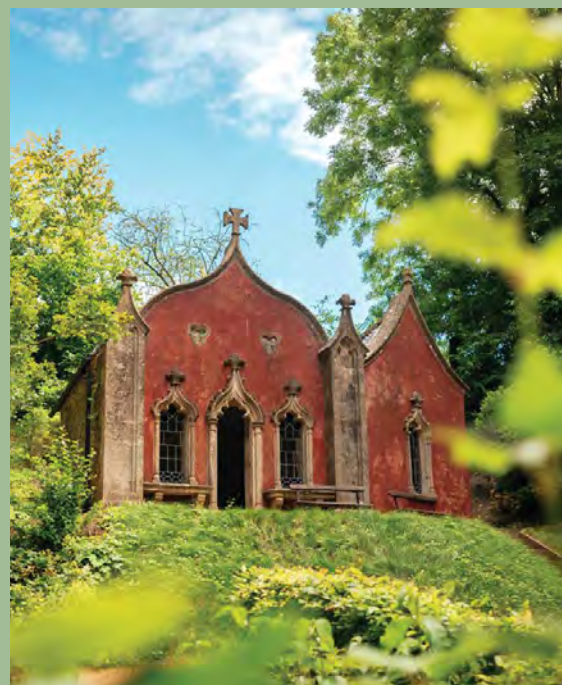
We offer drive-walk and pure walking photography tours tailored to show you the beautiful Cotswolds in the very best light! See full details of our tours at www.cotswoldphotographytours.co.uk

Cotswold Alpacas

Cowley GL53 9NJ
Tel 07989 441312
www.cotswoldalpacas.co.uk



We run our wonderful outdoor alpaca experiences and can tailor this experience for a special occasion. You can also book onto our fleece workshops, showing how the fleece is spun and dyed. If you want to learn more why not join a husbandry course to learn more about these fascinating animals.



Painswick Rococo Garden

Painswick GL6 6TH
Tel 01452 813204
www.rococogarden.org.uk



Designed in the 1740s as a flamboyant pleasure garden for holding intimate garden parties, this hidden valley is now the country's only surviving complete rococo garden. Enjoy beautifully framed views or hide away in one of the fanciful garden buildings. Battle to find the centre of the unusual maze and enjoy a hot drink and a delicious cake in the café.

Stow-on-the-Wold

At nearly 800 feet, Stow is the highest of the Gloucestershire Cotswolds towns and famous as a centre for antiques. The town radiates from the impressive market square, surrounded by Cotswold stone buildings. There is a good selection of specialist shops, cosy cafés and inns to enjoy.

Stow has a fascinating history, with the market square once host to some of the Cotswolds' largest sheep fairs, with up to 20,000 sheep herded into the square for sale. The medieval Market Cross and the old stocks give a sense of Stow's early history.

Stow had a significant role in the English Civil War – it was at nearby Donnington that the last battle was fought in 1646. St Edward's Church was used as a prison for the defeated Royalist troops and is well worth a visit.

Stow is also home to England's oldest inn, The Porch House, as well as a great choice of other places to eat in the town.

www.cotswolds.com/Stow



All images © Emma Lathwood, The Picture Taker



Cotswold Electric Bike Tours

Kingham OX7 6YQ

Tel 01608 659378

www.cotswoldelectricbiketours.co.uk



Our state-of-the-art electric bikes will help power you through the beautiful Cotswold countryside and villages. It really is the most relaxing way to explore this area of natural beauty. Tours are based on carefully chosen circular routes which take advantage of the quietest country roads and lanes, giving each circuit a subtly different flavour of the Cotswolds.



Daylesford

Near Kingham GL56 0YG

Tel 01608 731700

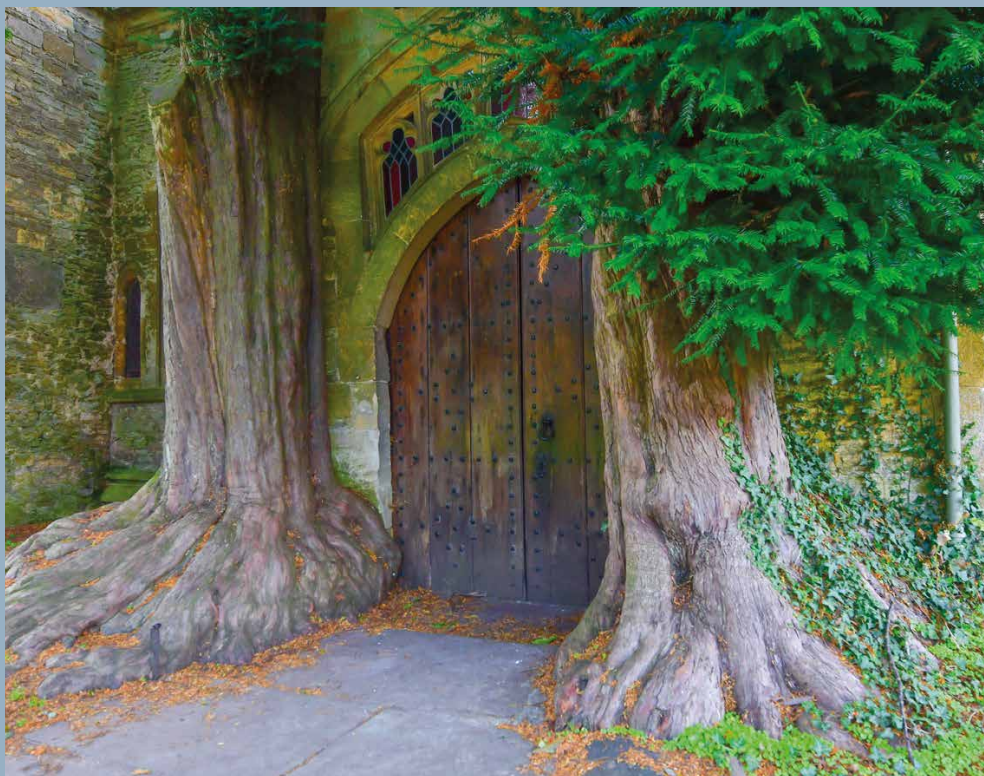
www.daylesford.com



There is so much to explore, discover and do at our organic farm in the Cotswolds. Our iconic flagship location is surrounded by clover-rich pastures where our organic animals roam freely.

Fresh vegetables, fruit and herbs are picked each morning from the Market Garden, which is just steps away from our award-winning farmshop & café, kitchens, bakery and creamery.

Beyond the farmshop, you will find the Bamford Barn, Wellness Spa, Workshop, Cookery School and, of course, several options for indoor and outdoor dining and drinking throughout the day and into the evenings.



St Edward's Church

Stow-on-the-Wold GL54 1AB

The Church of St Edward was built between the 11th and 15th centuries – with further additions and renovations in Victorian times – on the site of an earlier Saxon church. The present church houses traces of Norman stonework, 13th century Early English columns and arches, and a south tower and nave clerestory of Perpendicular style. The 88ft high 4-stage tower, completed in 1447, is a conspicuous landmark due to its embattled parapet with pinnacles and a string course with gargoyles. Externally, the most striking aspect is the pair of ancient yew trees flanking the porch.

The church played a role in the Battle of Stow when on 21 March 1646 Stow was the scene of the final battle of the first phase of the English Civil War, where Parliament's New Model Army defeated Royalists led by Sir Jacob Astley. Royalist prisoners were held in the church after the battle. One reminder of those grim days is an incised memorial set into the chancel floor commemorating the Royalist soldier Captain Hastings Keyte of Ebrington.



Larkswold

Adlestrop GL56 0YF
Tel 07704 346458

www.larkswold.com



Take your place for a few hours or even a whole day. Wholesome food, warm company and gentle artistic pursuits are led by friendly craftspeople in our welcoming Larkswold marquee set in the grounds of Station House, Adlestrop. With workshops ranging from lino and block printing, wreath-making, arm-knitting, willow-weaving and candle making, it is the perfect setting to expand your skills at a relaxed pace. Come alone for some refreshing 'me-time' or with a group of friends or family. Workshops are suitable for complete beginners – our aim is that you leave us happy with your creation, inspired to create more and feel restored and rejuvenated, ready to head back to the real world!



The Yellow Hat Tribe

Church Westcote,
Chipping Norton OX7 6SJ
Tel 01993 832042

www.theyellowhattribe.net

The Yellow Hat Gallery, which is also a studio, is well worth a visit. You can see the artist, Irene, creating her new paintings. There are over 100 pictures to view and enjoy along with numerous items for sale. This is a gallery with a difference, it's full of sunshine and happiness.

Stroud Valleys & Severn Vale

Stroud is a delight to wander round and you'll find an eclectic mix of galleries, cafés and shops to explore – selling everything from fossils to fairies and vintage to vinyl – and one of the best farmers' markets in the country. The Cotswold Way runs close by and Rodborough, Minchinhampton and Selsley Commons overlook the town, offering the perfect spot for a picnic or to fly a kite, while enjoying the stunning views. Wotton-under-Edge, nestled in the Severn Vale, is an excellent centre for walking as you can join the Cotswold Way here. There is a vibrant community arts centre, interesting heritage centre and, in summer, an outdoor swimming pool. Don't miss the little town of Berkeley which is well worth exploring, not only for magnificent Berkeley Castle but also Dr Jenner's House, Museum and Garden.

www.cotswolds.com/Stroud



All images © Nick Turner



The Bell Inn Experiences

Selsley GL5 5JY
Tel 01453 753801
www.thebellinnselsley.com



Join us for a tour of the Cotswolds through local Gin. Three fun hours of ginspiration including quizzing, talking and of course tasting. Or why not join pub dog Bacchus for a pub walk. Plenty of sniffs and treats for

our four legged companions in the beautiful Cotswold countryside starting and finishing, where better than a pub!



Cattle Country Farm Park

Berkeley GL13 9EW
Tel 01453 810510
www.cattlecountry.co.uk



At Cattle Country we pride ourselves on our huge range of activities for children of all ages; outdoor play equipment and lots of farm animals to meet, GRAZE café serving delicious, locally-sourced food and two huge play barns perfect for rainy days. Cattle Country promises a great day out for all the family, in Berkeley, Gloucestershire.



Berkeley Castle

Berkeley GL13 9PJ
Tel 01453 810303
www.berkeley-castle.com
f t i

The oldest Castle in England to have been lived in by the same family that built it. Edward II was murdered here, and there are incredible links with William Shakespeare, Elizabeth I, Francis Drake and Edward Jenner. Immerse yourself in our amazing history, gardens and grounds, Yurt Tearoom, gift shop and an exciting schedule of events. Please check our website for more information and to book your tickets.



Cotswold Canals Trust

Stroud GL5 3JS
Tel 01453 752568
www.cotswoldcanals.org.uk
f t i

The Cotswold Canals offer many interesting things to see and do. Whether it's a quiet stroll along the restored towpath or something more active. There are so many ways to enjoy this beautiful treasure. The Cotswold Canals Trust operates two visitor centres at Wallbridge and Saul Junction which offer friendly, helpful advice about the canals and their restoration.



Cotswold Country Flowers

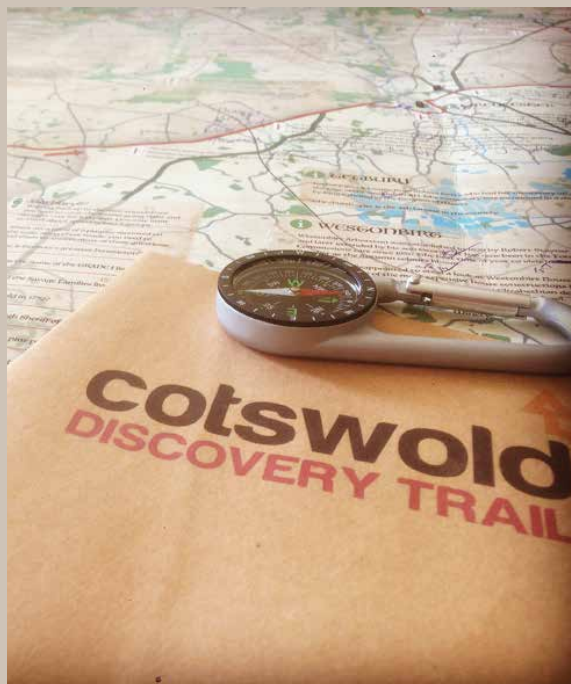
Dursley GL11 5AS
Tel 07967 416799
www.cotswold-country-flowers.co.uk
f i

A visit to this Cotswold cut flower garden is a memorable one; 'a flower cutters paradise, such a lovely experience', said one visitor.

Fiona grows and supplies gorgeous, freshly cut British flowers from her garden near Stroud.

She runs flower filled workshops (suitable for absolute beginners) and other events such as *Pick Your Own Flowers* and *Open Gardens*. Her *Garden to Vase* workshops allow you to cut your choice of flowers from the garden before learning how to make and wrap a hand-tied bouquet.

In the late autumn she offers *Dried Flower Wreath* making workshops and closer to Christmas, at her *Christmas Wreath* workshops you will learn how to weave a willow wreath adorned with seasonal foliage.



Cotswold Discovery Trail

Tel 01453 768598

www.cotswolddiscoverytrail.com



With the Cotswold Discovery Trail, you will discover the history and heritage of the Cotswolds with our beautifully designed treasure trail maps and trail pack. There are two fun-filled trails to follow which guide you around the Cotswolds, spanning the four historic counties of Gloucestershire, Oxfordshire, Worcestershire and Wiltshire and over 5,500 years of history. Each trail takes a day to complete in a car, structured around many highlights where you explore on foot, with a total drive time between 2-3 hours.

For any enquiries please contact us at info@cotswolddiscoverytrail.com



Dr Jenner's House, Museum and Garden

Berkeley GL13 9BN

Tel 01453 810631

www.jennermuseum.com



From Gloucestershire in the 1790s to Somalia in the 1970s, Dr Jenner's House, Museum and Garden traces the impact of one of the pivotal events in world history, in the place where it happened. Today you can see Jenner's Study, explore his garden, including the historic Vinery and the modern Physic Garden, and stand in the Temple of Vaccinia, where Jenner vaccinated the people of Berkeley free of charge.

Cotswold Mountain Biking

Dursley GL11 5AS

Tel 07717 122119

www.cotswoldmountainbiking.co.uk



Welcome to Cotswold Mountain Biking where my aim is to share my passion for off-road cycling in this stunning part of the Cotswolds! My guided rides are offered as private rides for adults and/or teenage children (age 13 years or above). The maximum group size is five riders. The rides will typically be half day 'round routes' that take about 3½ hours/25-30 km with approx 600-800m of ascent (and descent!).

Don't worry if you haven't got your own bike as you can hire one from me – two of my hire bikes are electric MTBs so you'll be sure to fly up the hills, as well as down!



Dunkirk Mill Museum

Nailsworth GL5 5HH

Tel 01453 766273

www.stroudtextiletrust.org.uk



Admire the powerful waterwheel driving historic textile machinery that used to put the finishing touches to fine West of England woollen cloth in this former fulling mill.

Only disabled parking on site. Walk one kilometre from Egypt Mill Hotel, Nailsworth on the Cycle Trail towards Stroud to get to the Museum.





The Museum in the Park

Stroud GL5 4AF
Tel 01453 763394
www.museuminthepark.org.uk
f t i

Discover this fascinating local history museum at the heart of the beautiful grounds of Stratford Park. There is an art gallery with changing exhibitions too, and the enchanting Walled Garden which inspires and delights throughout the seasons.



Nympsfield Long Barrow

Coaley, Dursley GL11 5AU
www.english-heritage.org.uk
f t i

Nympsfield Long Barrow stands high on the Cotswold scarp near Frocester, with spectacular views over the Severn Valley. Constructed in the Neolithic period, it has long been the subject of local legends and bizarre stories, including one that it was a refuge for lepers.



Newark Park

Ozleworth, Wotton-under-Edge GL12 7PZ
Tel 01453 842644
www.nationaltrust.org.uk/newark-park
f t i

Newark Park stands proud on top of the Cotswold escarpment, looking down into the Ozleworth valley and to the Mendips beyond.

Newark House, with its Tudor origins and later extensions, has intriguing stories to tell, with a quirky collection of furnishings and impressive views. The gardens and estate feature a number of seasonal specials: from snowdrops in February, bulbs and wild garlic in spring, colourful borders in summer to the cyclamen and estate colours in autumn.

In the relaxing gardens you can enjoy a small selection of light snacks and refreshments from our tea pavilion.





Purton Ships Graveyard

Purton, Berkeley GL13 9HU
www.friendsofpurton.org.uk

Purton lies on the southern bank of the River Severn about half a mile north of the port of Sharpness.

Known as the Purton Ships Graveyard, or Purton Hulks, the area has a large number of purposely abandoned boats and ships that were beached on this area of the River Severn with the aim of reinforcing the river bank.

Most of the vessels were laid-up in the 1950s and now, as a result, the ground level has built up meaning you can now see a few barges lying on top of earlier ones.

This unusual site, with the vessels in considerable decay, forms the largest ship graveyard on the mainland and explanatory boards help visitors understand more about the vessels and site.



Sharps and Sparks Outdoor

Courses are based at:
 Nailsworth and Notgrove
 Tel 07917 063033
www.sharpsandsparksoutdoor.com



Connect with your outdoors by booking one of our experiences. From bushcraft, where you learn or enhance your skills for living comfortably outdoors, to woodland crafts, navigation skills or an introduction to hammock camping. All courses are carried out in stunning locations in the North and South Cotswolds.

Tyndale Monument

North Nibley, Dursley GL11 6DS
www.northnibley.org.uk/monument.php

Standing on the Cotswold escarpment overlooking North Nibley you will see the Tyndale Monument. This striking 111 foot tower was built in memory of the writer, William Tyndale, thought to be born nearby and famous for translating the Bible into English. Although his exact birthplace is not known, he spent his childhood in the Dursley area before going to Oxford to study Greek.

The memorial was suggested some three centuries later with the monument inaugurated in 1866 three years following the foundation stone being laid.

Inside the tower a narrow, dark, winding staircase leads to an enclosed viewing platform. If you have the energy and don't suffer from claustrophobia, the view is worth the climb.





Uley Long Barrow (Hetty Pegler's Tump)

Coaley, Dursley GL11 5BH
www.english-heritage.org.uk
 f t i

Uley Long Barrow is a partially reconstructed Neolithic burial mound, at least 5,000 years old, and impressively sited overlooking the Severn Valley. It's known locally as Hetty Pegler's Tump, after Hester Pegler who owned the land in the 17th century. Between 15 and 20 skeletons have been recovered

from the burial mound over the years, but we know little about the subsequent history of these finds. Two skulls went to Guy's Hospital in London, but it is said that most of the bones were reburied in Uley churchyard. The barrow as seen today is largely the result of excavation and reconstruction between 1854 and 1906.



Woodchester Mansion

Nymphsfield, Stonehouse GL10 3TS
 Tel 01453 861541
www.woodchestermansion.org.uk
 f t i

Unique, amazing – a hidden unfinished neo-Gothic house in Woodchester Park. This Grade I listed building has been saved from dereliction but will never be completed. Visitors can also learn about the Mansion's colonies of Horseshoe bats and watch them live in their roosts via CCTV. Mansion open Fridays to Sundays plus Bank Holidays from Good Friday to the last Sunday in October. Check website for details. When open there is a minibus to the Mansion on the hour from 11am to 4pm or a 20-minute walk. Refreshments. Guided tours at 11.45am and 2.30pm. Parking in Woodchester Park car park (National Trust).



Woodchester Valley Vineyard

Woodchester GL5 5HR
 Tel 07523 967219
www.woodchestervalleyvineyard.co.uk
 f t i

Woodchester Valley is a family-owned boutique vineyard and winery in the South Cotswolds producing a range of award-winning still white, rosé and sparkling wines.

Join us on one of our tours and learn about the world of English wines. Our tours are friendly, informal and informative and will give you an insight into the world of wine-making plus the chance to try a range of our multi award-winning wines.

Or why not stay with us? We have accommodation on site ranging from our luxurious vineyard barn suites, perfect for a weekend getaway, to self catering dog-friendly homes, ideal for a family holiday. The perfect base for exploring the Cotswolds!





Woodchester Park

Nympsfield, near Stonehouse GL10 3TS

Tel 01452 814213

www.nationaltrust.org.uk/woodchester-park



Woodchester Park is home to the remains of an 18th and 19th century landscape park, a Victorian mansion, ancient woodlands, pasture and an abundance of wildlife. Follow the three permissive

routes around the parkland and have fun spotting all the wildlife.

In spring smell the wild garlic growing in the woods and hear woodpeckers tapping on the trees in summer. Feel the scrunch of fallen leaves beneath your feet in autumn while winter puddles are great for making a splash.



Wotton-under-Edge Museum and Heritage Centre

Wotton-under-Edge GL12 7AD

Tel 01453 521541

www.wotton-under-edge.com/visit-wotton/the-town



Housed in a converted fire station and located in The Chipping, the Centre contains a sizeable collection of archives, records, photographs and genealogical material. There are three or four different exhibitions each year which display items of interest of local, and on occasion, national history. In addition, there is a full programme of lectures. Visit the website for current information.

WWT Slimbridge Wetland Centre

Slimbridge GL2 7BT

Tel 01453 891900

www.wwt.org.uk/slimbridge



Discover a safe haven of wide open spaces bursting with wetland nature. Fill your lungs with fresh air, stretch your legs and get ready to explore this extraordinary wetland paradise, whatever the weather. Splash about at *Welly Boot Land* or go wild in *Riverlife* outdoor play areas. Discover the world of amphibians at *Toad Hall* or see if you can spot all six species of flamingo. Learn all about marvellous mammals – look out for the secretive water voles and see how many cute harvest mice you can count. Visit the *Arctic Adventure* experience and imagine life on the Arctic Tundra, where WWT studies wildlife including Bewick's swans, or step back in time at *Scott House Museum*. For those looking to experience the wild parts of the reserve, take a walk to one of the many bird hides and explore the fully accessible Estuary Tower to take in the stunning sights of the Severn Estuary.



Tetbury

Tetbury is an architectural gem, with many of the buildings unchanged since they were built in the 16th and 17th centuries, including the Market House, where wool and yarn were sold and the present day markets are still held. A walk down Chipping Steps and onto Gumstool Hill reveals 17th century weaver's cottages, and the location for the annual Woolsack Races, a long-standing tradition where competitors run up a steep hill with a weighty woolsack on their back. Take time to explore St Mary's Church, a Gothic gem which has one of the tallest spires in Britain, and the Tetbury Police Museum, housed in the town's old police cells.

The town is well-known for its independent shops, including antiques, vintage and interiors, exclusive boutiques, and the Highgrove shop. The Tetbury Goods Shed, a thriving, creative arts centre set in a renovated Victorian railway building, lies just a few minutes' walk from the town centre.

Further afield the lush, rolling countryside that surrounds Tetbury is home to a stunning array of attractions from the National Arboretum at Westonbirt to the glorious Elizabethan Chavenage House, the Arts & Crafts Manor at Rodmarton, and HRH Prince of Wales' unique garden at Highgrove.

www.cotswolds.com/Tetbury



All images © The Picture Taker, VisitTetbury.co.uk



Chavenage House

Chavenage, Near Tetbury GL8 8XP
Tel 01666 504696

www.chavenage.com



Chavenage House is a wonderful Elizabethan manor of mellow Cotswold stone with Cromwellian associations and adjacent chapel. Furniture, tapestries and relics from the 17th century. Medieval barn, ghost stories and legends. Take a guided tour and see the rooms where Oliver Cromwell and his General, Ireton, stayed in 1648 as well as hearing about ghosts who allegedly stalk the corridors.

Chavenage has been used in many film and TV productions, most notably the hugely popular BBC drama *Poldark*.

For information and opening times – go to the website.

Hookhouse Pottery

Westonbirt, Tetbury GL8 8TZ
Tel 01666 880297

www.hookhousepottery.co.uk

Christopher White invites you to view the fine stoneware pots made here since 1975.

Woodfired work includes two comprehensive ranges of domestic ware (the teapots really pour well!), the 'famous' Hookhouse flower arrangers, and fully frostproof garden pots.

A selection of one-off pieces features examples of the striking black and white geometrical patterns for which Hookhouse Pottery has become known.





Owlpen Manor

Near Uley GL11 5BZ
Tel 01453 860261

www.owlpen.com



Remote Cotswold valley with romantic Tudor manor house and famous terraced gardens, recently described as *'the most beautiful place in England'*.

Enjoy exclusive Cotswold weddings in the medieval Cyder Barn, stay in one of nine boutique holiday cottages, discover miles of woodland walks or visit the house and gardens to find out more about the fascinating 1,000-year history of this truly English hidden gem.



Rodmarton Manor & Gardens

Rodmarton GL7 6PF
Tel 01285 841442

www.rodmarton-manor.co.uk

Rodmarton Manor is the supreme example of a house built and all its furniture made according to Arts & Crafts ideals. It was one of the last country houses to be built and furnished in the old traditional style when everything was done by hand with local stone, local timber and local craftsmen. The eight acre

garden is interesting any month of the year but really beautiful throughout the summer months. It was designed originally as a series of outdoor rooms and is still the same today.



The Royal Gardens at Highgrove

Doughton, near Tetbury GL8 8TQ
www.highgrovegardens.com



From the moment you drive through the gates you sense that Highgrove, the private home of TRH The Prince of Wales and The Duchess of Cornwall, is a very special place. On a fascinating two-hour tour, visitors can experience the beautiful, organic gardens created by The Prince. Afterwards the Orchard Tea Room will be open, offering mouth-watering refreshments, and also the Estate Shop, with its inspired giftware collections.





Tetbury Goods Shed Arts Centre

Tetbury GL8 8EY
Tel 01666 505496
www.shed-arts.co.uk
f t i

it features live music, theatre, cinema nights and craft workshops. For the latest events and information please see our website.

The Goods Shed is a vibrant arts centre together with the popular on-site Whistle Stop Café in Tetbury. Based in a stunning, renovated Victorian railway building set alongside parkland and walks,



Tetbury Police Museum & Courtroom

Tetbury GL8 8AA
Tel 01666 504670
www.tetbury.gov.uk
t

A historical collection of items used by the police in Gloucestershire Constabulary. The original police offices and cells now contain a most interesting and not-to-be missed array of exhibits and memorabilia, including the world-renowned Alex Nichols collection of handcuffs and restraints. On the first floor there is a complete magistrates court with a display depicting a hearing as it would have been in the late 1940s or early 1950s.



Westonbirt, The National Arboretum

Westonbirt, Tetbury GL8 8QS
Tel 0300 067 4890
www.forestryengland.uk/westonbirt
f t i

Planted by the wealthy Holford family during the heyday of Victorian plant hunting, this collection of rare and remarkable trees has few rivals. 15,000 trees and shrubs are carefully laid out within a wonderful Grade I picturesque landscape.

Whether you're passionate about trees or looking for somewhere beautiful to escape, relax or have an adventure Westonbirt's collection from around the globe is a special place. Westonbirt has something to offer all year round - seasonal trails, guided walks and family activities.



Westonbirt House and Gardens

Westonbirt, Tetbury GL8 8QG

Tel 01666 881373

www.holfordtrust.com/westonbirt-house

Robert Stayner Holford (1808-1892), a prodigious and cultured millionaire, employed Louis Vulliamy to design and build this grand country house in the later half of the nineteenth century. The house has been

a boarding school since 1928 but the site is open for visitors to the house and grounds between April and October. Visit the website for details on openings.



Wild Carrot

Chavenage, Near Tetbury GL8 8XW

Tel 01666 800720

www.wildcarrot.co.uk



Create sustainable, guilt-free fun adventures with us that promote healthy living and encourage time out to re-discover the joy of nature, all within the beautiful countryside. The best way to enjoy the Cotswolds is on two wheels, we provide guided rides along

country lanes or adrenaline fuelled routes around the Chavenage estate. Or glide around the estate on One Wheel, an experience to destroy boredom!

For Wild Carrot the Cotswolds is home. We take great pride in delivering unique cycling experiences for our guests by riding along the quieter lanes, stopping at hidden landmarks or showcasing undiscovered views all of which you only know exist if you have spent time cycling around the area.

Tewkesbury

Historic Tewkesbury lies where the rivers Severn and Avon meet and offers one of the best medieval townscapes in England. Delightful timber-framed houses and narrow alleyways surround an outstanding 12th century Benedictine Abbey. The Norman Abbey tower provides spectacular views of Bredon Hill, the Malverns and the Cotswold hills. Take a journey through the town's history at the heritage centre and explore the eclectic treasures of the museum, housed in an unspoilt 17th century building. You should also visit the John Moore Museum with its extensive natural history collection.

Tewkesbury is renowned for its selection of great places to eat, excellent independent shops, and wonderful accommodation. Make sure to spend some time enjoying the rivers – whether it's a leisurely stroll along the banks, a fish and chip lunch watching the wildlife, or a relaxing cruise watching the beautiful scenery go by.

www.cotswolds.com/Tewkesbury



All images © Nick Turner





The Battle Trail

Tewkesbury
www.visittewkesbury.info



The Battle of Tewkesbury was fought on Saturday 4 May 1471 over fields to the south of Tewkesbury and much of the battlefield remains open today. A waymarked 45 minute walking route takes you through the key areas. Information panels are dotted along the route and will help explain the significance of the various locations. A Battle Trail leaflet is available from the Tourist Information Centre or to download from the website.



Croome

Near High Green, Worcester WR8 9DW
 Tel 01905 371006

www.nationaltrust.org.uk/croome



Discover something new each time you visit the National Trust property Croome.

A secret wartime airbase, it was once a hub of activity for thousands of people in the 1940s. Stroll through acres of parkland and discover Croome Court at its heart. Once home to the Earls of Coventry, the house tells the story of its eclectic past in new and inventive ways. Please book your visit through www.nationaltrust.org.uk/croome/whats-on



Croft Farm Water Park

Bredons Hardwick GL20 7EE
 Tel 01684 772321
www.croftfarmwaterpark.com



Croft Farm Water Park is a resort destination situated just outside Tewkesbury. With its own lake, watersports activities and tuition, including SUP, sailing, windsurfing, canoeing or powerboating, it is perfect for an activity-based family holiday

or simply a great day out. Make a break of it and book into one of our luxury lodges or bring your own caravan or tent.

Deerhurst Church and Odda's Chapel

Deerhurst, Gloucester GL19 4BX
www.english-heritage.org.uk



One of the most complete surviving Saxon churches in England, this chapel was built in 1056 by Earl Odda, a relation of Edward the Confessor. It was incorporated into a farmhouse in the 17th century, with a kitchen in the nave and a bedroom in the chancel, and rediscovered in 1865.

The chapel comprises a square-ended chancel divided from the nave by a solid chancel arch. The main Saxon features are the alternating long and short quoins, the windows, the chancel arch and the north door of the nave. Nearby is the equally famous Saxon parish church.





The John Moore Museum

Tewkesbury GL20 5SN

Tel 01684 297174

www.johnmooremuseum.org



Nestled in a row of historic timber-framed buildings close to the Abbey, the museum was established in 1980 in memory of the writer and naturalist John Moore. It is the home to an extensive natural history collection featuring specimens of mammals and birds native to our countryside.

A few doors away is The Merchant's House, a two storey building which has been beautifully restored and furnished to show the construction of a 15th century shop and dwelling. Also includes the Old Baptist Chapel, a restored medieval building and a 17th/18th century Baptist meeting house.

The Roses Theatre

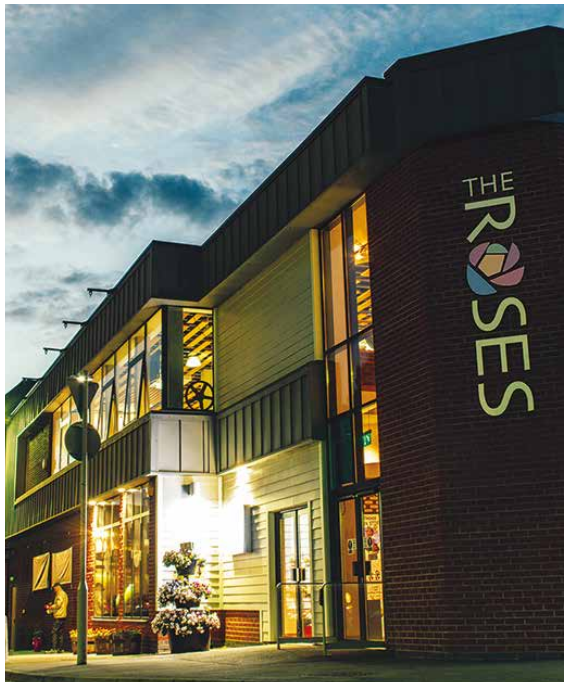
Tewkesbury GL20 5NX

Tel 01684 295074

www.rosestheatre.org



The Roses is a busy and popular arts centre in Tewkesbury with an eclectic programme of live events, participatory activities, exhibitions and festivals. In addition to the 370 seat auditorium, The Roses boasts a relaxing bar and coffee shop where you can enjoy pre-show and interval drinks, as well as live entertainment including jazz and folk music and stand up comedy. Complete with an exciting film programme of world, independent and UK film, The Roses is a diverse and exciting arts venue.



Tewkesbury Abbey

Tewkesbury GL20 5RZ

Tel 01684 850959

www.tewkesburyabbey.org.uk



Tewkesbury Abbey is a parish church of cathedral proportions tucked in the middle of the bustling market town of Tewkesbury. The present church was originally used as the church for the Benedictine Monastery which was founded here in the 10th century. After the Dissolution of the Monasteries it became the parish church for the town. In addition to some very fine Norman architecture, don't miss the 15th century stained glass, unique roof bosses and the 17th century Milton Organ still used today.



Tewkesbury Heritage Centre

Tewkesbury GL20 5AB

Tel 01684 855040

www.tewkesburyheritage.co.uk



This superbly restored 17th century building is home to our innovative heritage centre. A self-guided tour around the centre will take you through the history of Tewkesbury's earliest settlers, give an insight into the Wars of the Roses and the Battle of Tewkesbury in 1471, reveal the town's links to the Civil War and show how the industrial revolution affected the commercial prosperity of the community before bringing you back to the present day. The centre is a free attraction and perfect for families as well as architecture, history and restoration enthusiasts.



Tewkesbury Nature Reserve

Tewkesbury

www.tewkesburynaturereserve.org.uk



Tewkesbury Nature Reserve has something for the whole family. A walk round the reserve is a great way to keep fit and observe the wildlife. Whether you like birds, butterflies or wildflowers, there is always something of interest to see. Bring a picnic and enjoy the peace and reconnect with nature.

Visitors have a car park situated off the Tewkesbury bypass and can use robust accessible pathways to viewing platforms overlooking key habitats within the reserve. New and improved signage has been recently added throughout the reserve offering a range of routes. Interpretative boards will inform and educate, to provide a high quality visitor attraction.

The reserve offers a year round attraction with wildlife changing with the seasons.



Tewkesbury Museum

Tewkesbury GL20 5PX

Tel 01684 292901

www.tewkesburymuseum.org



Discover Tewkesbury's rich and diverse heritage through a collection which ranges from Roman remains through to wartime austerity. Learn about notable Tewkesbury people like Antarctic explorer Raymond Priestley. Study the magnificent diorama of the Battle of Tewkesbury and the unique fairground model. The Museum is very child-friendly with activities to keep them absorbed. Allow at least an hour for a visit.



Toff Milway – Conderton Pottery

Conderton, near Tewkesbury GL20 7PP

Tel 01386 725387

www.toffmilway.co.uk



Toff makes a diverse range of beautiful and functional pottery. Visitors will find a large selection of work for sale in the gallery which adjoins the studio. He loves to make pots for use, including pots for cooking and a range of unique tableware. A specialised range of sculptural ceramics are also available.

Winchcombe

Winchcombe is an attractive market town in a beautiful setting, nestled between some of the Cotswolds' highest hills.

Once a Saxon walled town, the wool trade led to Winchcombe's prosperity and it is now a thriving, lively centre, with a good selection of shops and places to eat.

Explore streets lined with pretty Cotswold honey-coloured cottages and hidden courtyard gardens. Don't miss Dent's Terrace, a splendid set of almshouses, and Winchcombe Museum with displays celebrating the town's rich history.

Spot over 40 gargoyles, said to represent local town characters in the 1460s, outside the impressive Church of St Peter.

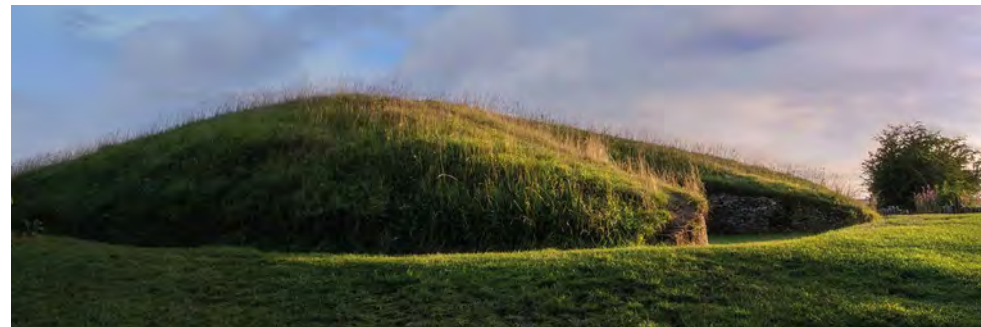
Sudeley Castle sits majestically on the edge of the town, renowned for its 1,000 year royal history and beautiful gardens. Nearby Belas Knap is a Neolithic long barrow in a spectacular hilltop location above Humblebee Woods (beloved of Tolkien).

The town has Walkers are Welcome status and it's a great starting point to stride out and discover the Cotswolds.

www.cotswolds.com/Winchcombe



All images © The Picture Taker, Stephen Shepherd



Belas Knap Long Barrow

Winchcombe GL54 5AL

www.english-heritage.org.uk



Belas Knap is a particularly fine example of a Neolithic long barrow, with a false entrance and side chambers. Excavated in 1863 and 1865, the remains of 31 people were found in the chambers. The barrow has since been restored.



The Bugatti Trust Museum & Study Centre

Near Gotherington, Prescott GL52 9RD

Tel 01242 677201

www.bugatti-trust.co.uk



A fascinating historic Bugatti exhibition for everyone interested in cars, engineering and art & design. The artistry and individuality are demonstrated by photographs, models, diagrams, mechanical components and complete cars. Many thousands

of original photographs, drawings and factory documents are available for academic research.

A Cotswold heritage gem for the whole family. The Bugatti Trust has a visitor centre which is open all year round. Visitors must check the website www.bugatti-trust.co.uk for opening times, prices and details of how to book.



© Steven Baker

Hailes Abbey

Winchcombe GL54 5PB

Tel 01242 602398

www.english-heritage.org.uk/hailes



Built in the 13th century by the Earl of Cornwall, the beautiful ruins of Hailes Abbey are set amongst delightful Cotswold countryside.

Once the centre of monastic life, the abbey is now the perfect place to relax and enjoy a picnic in a unique historic setting.

Make sure to visit the museum to discover the treasures of Hailes, uncovering stories of the monks who lived and worshipped at the abbey for nearly three centuries.

Stanway House & Gardens

Stanway GL54 5PQ

Tel 01386 584469

www.stanwayfountain.co.uk

Golden-stoned Jacobean manor house with exquisite gatehouse set amid 20 acres of landscaped grounds. Important 14th century tythe barn. Tudor great hall with shuffleboard.

Stanway is famous for its 300ft single drop fountain, the highest gravity fountain in the world.



Gloucestershire Warwickshire Railway

Toddington GL54 5DT

Tel 01242 621405

www.gwsr.com



The Friendly Line in the Cotswolds offers a unique opportunity to sample train travel from 50 years ago. On your 24 mile round trip you can experience the glory of steam and those 'new' diesel railcars with the panoramic views. Large diesel locos also haul some services.

You'll pass through glorious Cotswold scenery. To the west the Vale of Evesham, the Malverns and Wales and to the east, right at the side of the track, the Cotswolds climb steeply uphill.

All our stations have modern facilities, including food and drink options, and our on-train catering includes our legendary bacon baps!

Special events are held throughout the year.



Sudeley Castle & Gardens

Winchcombe GL54 5LP
Tel 01242 604244
www.sudeleycastle.co.uk
f t i

Set against the backdrop of the Cotswold hills in an Area of Outstanding Natural Beauty, Sudeley Castle & Gardens has played an important role in England's history, boasting royal connections that stretch back over 1,000 years. Famously the former home of Queen Katherine Parr, the last and surviving wife of Henry VIII, who lies entombed within St Mary's Church in the castle grounds, and remains the only English queen to be buried on private land.

Not to be missed on any visit are the medieval ruins, award-winning gardens, rare-breeds pheasantry, and a gigantic adventure playground which all combine for a fun-filled day for the whole family.



© Nigel Schemmly

Winchcombe Museum

Winchcombe GL54 5LJ
www.wincombemuseum.org.uk
f

Winchcombe Museum is an accredited museum set in the very heart of this ancient and historic town. The museum contains a large collection of local items relating to the life and times of the town and surrounding areas over many hundreds of years. It also houses a large collection of the world-famous Winchcombe Pottery. Winchcombe Museum is very family-friendly, with activity sheets available for children and there is full easy access for disabled visitors.



Winchcombe Pottery

Winchcombe GL54 5NU
Tel 01242 602462
www.wincombepottery.co.uk
f i

There has been a pottery on the current site in Greet since at least 1800, meaning that Winchcombe Pottery is one of the longest running craft potteries in the country. The pottery makes some of the finest and most practical domestic pottery in the world and the on-site shop is open to the public.

Witney

The largest of the market towns in the Cotswolds, Witney has a charming, bustling atmosphere. The long High Street is lined with an eclectic mix of independent shops and high street names, along with two pedestrianised shopping centres, a cinema and a fantastic selection of places to eat and drink. There are regular markets outside the Victorian Corn Exchange and many wonderful annual festivals held.

Witney's architecture reflects its past prosperity from the wool trade, including the 17th century Buttercross, the church of St Mary the Virgin, with its 150 metre spire, and the fine tree-bordered green.

The Witney and District Museum offers a fascinating insight into Witney's history, with items from the local brewing, glove making and engineering industries. Make sure you visit Witney Blanket Hall which contains artefacts and pictures illustrating the town's blanket-making heritage and take the Blanket Trail to explore the town at your own pace.

There are lots of green spaces to enjoy and just a short walk from the town centre, across the water meadow, lies Cogges, an historic farmstead with a fascinating story.

Witney is an ideal place to base your stay in the Cotswolds; the town offers plenty to do both during the day and evening and is perfectly located for exploring the Cotswolds and historic Oxford.

www.cotswolds.com/Witney



All images © The Picture Taker, R/A Photography



Aston Pottery & Gardens

Aston OX18 2BT

Tel 01993 852031

www.astonpottery.co.uk



Our hand-stencilled pottery is designed and made on-site using traditional methods of production.

Visit Aston Pottery's fabulous, award-winning showroom and browse the wide range of gifts including jewellery, bags, textiles and much more. See our latest contemporary designs along with familiar classics.

Take a break in our spacious country café, which serves a wide variety of delicious and locally sourced fare.

Experience our spectacular gardens, full of colour from June to October. With a multitude of borders and plantings it is something not to be missed, so come and be inspired.



Cogges Manor Farm

Witney OX28 3LA
Tel 01993 772602
www.cogges.org.uk
f t i

Cogges is a historic farmstead dating back to Saxon times. The Manor House lies at the centre of a magnificent Cotswold stone farmyard, with animals and a stunning walled garden.

The grounds house an orchard, walks by the river and an adventure play area next to the Norman moat. Dogs on leads are welcome too. Cogges Manor Farm has featured in a number of film and TV shows and was the location for Yew Tree Farm in *Downton Abbey*.

The farm shop sells gifts and souvenirs, as well as local beers and ciders. The Cogges Kitchen café serves exceptional coffee and cakes, breakfast, lunch and afternoon tea using the best seasonal produce.

Children can enjoy saying hello to the farm animals at a *Meet the Animals* session which are held at weekends.



The Fat Squirrel Outdoor Co.

Woodland on A4095,
North Leigh, Witney
Tel 07515 064399
www.fatsquirreloutdoor.co.uk
f t i

Come to Fat Squirrel Outdoor Co. for bushcraft, adventure and campfire experiences in a relaxed woodland setting. Our skilled instructors make it easy to get active and learn new bushcraft and adventure skills. Come to a campfire experience for a relaxed evening fire gazing, eating and drinking.

Marriotts Walk

Witney OX28 6GW
Tel 01993 704262
www.marriottswalk.co.uk
f t i

Marriotts Walk Shopping Centre Witney offers easy access and convenient stress free shopping, with FREE multi-storey parking.

Visit Marriotts Walk and enjoy a great place to meet, eat and shop.

Located in the heart of Witney, Marriotts Walk boasts leading fashion retailers, quirky independents and popular high street brands. Marriotts Walk regularly hosts live events, seasonal entertainment and has a premier cinema complex featuring the latest film releases.

Marriotts Walk has something for every age, taste and style.





Minster Lovell Hall and Dovecote

Minster Lovell OX29 0RR
www.english-heritage.org.uk
 f t i

After several changes of hands the hall was abandoned and eventually demolished in the 18th century, leaving the remains that stand today.

The picturesque ruins of Minster Lovell Hall, a 15th century manor house, lie in an attractive setting on the banks of the River Windrush. They include a fine hall, tower and nearby dovecote. The Hall was built in the 1430s by William, Baron of Lovell and Holand – one of the richest men in England.



Teddy Bears of Witney

Witney OX28 6HY
 Tel 01993 706616
www.teddybears.co.uk
 f t i

Founded in 1985 as the first shop in Britain to specialise in selling new and old teddy bears, we offer a choice of bears, which will take your breath away. In addition to hundreds of limited editions by the world's leading makers, we also have fun bears

(and their friends) at easily affordable prices.

When you visit you can also enjoy our museum collection, which includes Aloysius, the actual bear who starred in *Brideshead Revisited*.

There is free parking nearby.

We are open Monday to Saturday 9.30am-5pm by prior appointment.

Please ring in advance – a warm welcome awaits you.



North Leigh Roman Villa

North Leigh, Witney OX29 6PZ
www.english-heritage.org.uk
 f t i

The remains of North Leigh Roman Villa are set within a peaceful landscape on the banks of the River Evenlode. The 'courtyard villa' is considered to be one of the larger villas of Roman Britain. Today, two ranges of the former courtyard arrangement are visible. The most important feature of the site is a fine mosaic tile floor dating to the early 4th century.



Undiscovered Cotswolds

Witney OX28 1DR
 Tel 01993 256098
www.undiscoveredcotswolds.com
 f t i

Explore traditional hot-spots and undiscovered hidden villages. Breathtaking scenery, meeting local animals, afternoon cream tea, punting or cycling. Group or private tailor-made tours run by us passionate and friendly locals – Graham and Ian.



The Witney and District Museum

Witney OX26 6JA
Tel 01993 775915
www.westoxfordshiremuseum.co.uk
f

The museum is set across two floors with the ground floor holding displays relating to the history of Witney and the surrounding area. A seasonal programme of temporary exhibitions are held on the upper floor. There is also a large collection of archives and photographs which are available for family history research.



Witney Lake and Meadows

Witney OX28 4YB (nearest postcode)
www.witney-tc.gov.uk
f t

Witney Lake and Meadows is a 37 hectare country park that offers a picturesque area for recreation, whether that be taking the dog for a walk round the Lake's footpath, rambling through the tranquil landscape or relaxing whilst enjoying a picnic.

Witney Lake offers a gateway to the Lower Windrush Valley which is home to an abundant variety of plants and wildlife.

A walk around the lake on flat, mostly gravel paths, takes about 20 minutes, so it's the perfect spot for a short, child friendly walk and some fresh air, all year round.



Witney Blanket Hall

Witney OX28 6HL
Tel 01993 706408
www.blankethall.co.uk
f

Witney? Blankets, of course! For 500 years, from Nelson's sailors to the King of England, everyone slept soundly under a Witney blanket. Explore the gloriously restored 18th century Witney Blanket Hall at 100 High Street. Visit our excellent pie shop and choose a contemporary woollen throw or scarf to remember us by.



Wychwood Brewery

Witney OX28 4DP
Tel 01993 890800
www.wychwood.co.uk
f t @

The Wychwood Brewery is tucked away behind a main street in the market town of Witney. Brewing in Witney dates back to 1811 and Wychwood Brewery is sited at the Old Eagle Maltings, built more than 150 years ago when barley was malted for the town's brewery.

Today, Wychwood brews more than 50,000 barrels of high-quality crafted beer each year using traditional methods and is home to the legendary Hobgoblin and Brakspear beers.

See where the magic happens and sample our renowned beers on a two-hour brewery tour experience.

Woodstock

Sadly for them, most visitors to Woodstock never actually see the historic town centre, tucked away off the busy main road, as they're heading to Woodstock's grand and glorious neighbour, Blenheim Palace.

Woodstock is more than worthy of a visit in its own right. The town's fine Georgian facades disguise far older buildings that house all manner of fascinating hotels and cafés, shops and galleries. There are two excellent museums – The Oxfordshire Museum and the Soldiers of Oxfordshire Museum – and don't miss the town's church with its fine collection of embroidered kneelers and a musical clock, which plays a different tune each day.

Woodstock is definitely a place for leisurely browsing and a place to make discoveries – whether it's a unique gift in one of the many intriguing shops or just another fascinating snippet of history.

The real insider's tip is to stay in Woodstock: there are great places to stay and to eat; you'll have time to explore the town and all the delights it has to offer; but you'll also discover the best way to visit Blenheim Palace, on foot! Stroll down through the old town, turn the corner and suddenly you're at the Town Gate – enjoy the wonderful view, across the lake to the Grand Bridge and Blenheim Palace behind and spare a thought for those poor visitors that missed both Woodstock and the best view of Blenheim!

www.cotswolds.com/Woodstock



All images © Jay Alice Photography: Sophie Long; RIA Photography



Blenheim Palace

Woodstock OX20 1PP

Tel 01993 810530

www.blenheimpalace.com



Blenheim Palace is the home of the 12th Duke and Duchess of Marlborough and the birthplace of Sir Winston Churchill. This National Treasure houses some of the finest antique collections in Europe and boasts over 300 years of history to discover.

Explore this World Heritage Site set in more than 2,000 acres of 'Capability' Brown landscaped parkland. On your next visit, discover a major new exhibition bringing the world of Winston Churchill and his connections to Blenheim Palace to life. In addition, discover an immersive and interactive experience, in the Palace's historic stable block, showcasing the importance of horses at Blenheim down through the centuries.





Blenheim Tours

Woodstock OX20 1SL
Tel 07766 743084
www.blenheimtours.co.uk
f

Based in Woodstock, home to Blenheim Palace, near to Oxford and ideally located for circular trips around the beautiful north Cotswolds. Tailored to your interests and any 'must-see' destinations on your list, we will even recommend the perfect

stop for lunch or afternoon tea. We also offer themed days out e.g. Cotswolds Food & Drink, Midsomer Murders, Downton Abbey & Winston Churchill, city trips including Bath, Salisbury and Gloucester, visits to Stonehenge, Stratford-upon-Avon, Bicester Village and lots more.



Combe Mill

Combe, Long Hanborough OX29 8ET
Tel 01993 358694
www.combemill.org
f t i

Combe Mill Museum is the original 'workshop' of the old Blenheim Estate and is a working museum offering visitors a fascinating insight into the working conditions of our Victorian ancestors.

You get a feel for the past as you enter this un-restored building where you can talk with Society members operating the machinery and demonstrating lost skills.

Enjoy watching our steam beam engine power the line shafting that drives the woodworking machinery.

Refreshments are available and there is also a riverside picnic area.

Oxford Bus Museum

Long Hanborough OX29 8LA
Tel 01993 883617
www.oxfordbusmuseum.org.uk
f

Two exhibition halls telling the story of road transport in Oxfordshire from the end of the nineteenth century to the present day. In a separate workshop block restoration work can be seen in progress.

A family-friendly museum with a children's activity area.

Free vintage bus rides on selected dates; visit the website for details. Car park, shop and café.





© harpur garden images

Rousham

Nr Steeple Aston, Bicester OX25 4QX
Tel 01869 347110
www.rousham.org

Rousham is one of Britain's most unspoilt and undiscovered landscape gardens and was named by garden writer and broadcaster Monty Don as one of his favourite gardens in the country. Designed by William Kent in the 18th century, Rousham represents the first phase of English landscape design and remains largely unaltered since its conception. The gardens are dotted with classical features and delightfully situated statues and temples.

Don't miss the pretty walled garden with its herbaceous borders, small parterre, pigeon house and espalier apple trees.

Rousham's non-commercial nature means there is no tearoom or shop, but bring a picnic and enjoy the peace and tranquillity. (Please note: no children under 15, no dogs)



The Oxfordshire Museum

Woodstock OX20 1SN
Tel 01993 814106
www.oxfordshire.gov.uk/oxfordshiremuseum
f t

An 18th century house is home to the county's collections. Eleven galleries featuring archaeology, art, local and natural history, allow you to explore Oxfordshire's story from the Jurassic period through to Anglo-Saxons and Victorians. Relax in the beautiful walled garden, perfect for picnics, and don't miss the life-size Magalosaur that roamed Oxfordshire in the Dinosaur garden. It's as big as a bus!

All proceeds from the Garden Café and gift shop support the museum services.



The Soldiers of Oxfordshire Museum

Woodstock OX20 1SN
Tel 01993 810211
www.sofo.org.uk
f t @

Discover the military history of the region and its people. Climb the recreated Great War trench. Delve into the world of spies and secret agents. Hear the stories of the county's heroes past and present. Jump on the glider and prepare for D-Day.

The Soldiers of Oxfordshire Museum is an independent museum and relies on admission income to look after the collections for future generations.

Bourton-on-the-Water

Nestled amongst rolling hills, Bourton-on-the-Water is one of the most famous Cotswold villages and on most visitors' must see list. It can be extremely busy at peak times, especially at weekends and warm summer days, but is just as stunning draped in autumnal colour or on a crisp winter's day. If you plan to visit in the spring or summer, why not enjoy an evening in the village and dine in one of the wonderful restaurants.

Known as the 'Venice of the Cotswolds' because of the little bridges that arc over the River Windrush, which meanders through the village, it is simply stunning. This shouldn't just be a photo stop though, Bourton-on-the-Water has an eclectic mix of shops, cafés and restaurants to enjoy, as well as a number of attractions. Experience the village in miniature at The Model Village, visit Birdland Park and Gardens to see exotic birds including king penguins, or take a walk at Greystones Farm nature reserve.

www.cotswolds.com/Bourton



All images © The Picture Taker



Birdland Park and Gardens

Bourton-on-the-Water GL54 2BN

Tel 01451 820480 Ext 2

www.birdland.co.uk



Discover an amazing world of birds and their Jurassic ancestors. Meet flamingos, pelicans, cranes, emus and waterfowl that live in riverside habitats with colourful parrots, magical owls, pheasants, hornbills, touracos and many more inhabiting over 50 aviaries.

Penguin Shore is home to fascinating characters from Birdland's huddle of penguins including the majestic kings and comical humboldts. Watch their waddling turn into power and elegance through viewing windows as they glide underwater. Feeding takes place daily at 11am and 2.30pm.

Follow in the footsteps of dinosaur hunters in *Jurassic Journey*. Armed with a special tracker map, spot over 30 life-size dinosaurs from Brachiosaurus to Velociraptors.

Visit the website for any updates on restrictions/ticket purchases and to discover all the latest news!





Bourton Model Railway Exhibition and Toy Shop

Bourton-on-the-Water GL54 2AN
Tel 01451 820686
www.bourtonmodelrailway.co.uk

Over 40 British and Continental trains run over some of the finest operating indoor model railway layouts in the country. Three main displays in OO/HO and N Gauge with the unique attraction of visitor control. Follow the trains' journey through the imaginatively designed scenery, watch day change to night while enjoying the illusion enhanced by many working models. Large model and toy shop open to everyone.



Bourton Vale Equestrian Centre

Bourton-on-the-Water GL54 2HN
Tel 07910 138465
www.bourtonvaleequestrian.co.uk
f t i

Bourton Vale Equestrian Centre is a small, quirky stables nestled in between Bourton-on-the-Water and Lower Slaughter.

Horseback tours of the beautiful Slaughter villages for all ages and abilities.

Tuition available, river rides and pony days during the school holidays.



Cotswold Brew Co

Bourton-on-the-Water GL54 2HN
Tel 01451 824488
www.cotswoldbrew.co
f t i

Do you love beer and want to know more about brewing lager? Our expert tour guides will teach you all about the history of the Cotswold Brew Co, how lager is brewed and show you around our brewhouse, all supported by generous sampling.

Founded in 2005, Cotswold Brew Co were one of the first independent breweries in the UK to specialise in lager brewing. Beginning with their flagship beer, 'Premium Lager', they continued to develop and expand the range at their College Farm brewhouse in Bourton-on-the-Water to offer drinkers more choice from the style.



Cotswold Clubhouse

Bourton-on-the-Water GL54 2HQ
Tel 01451 263130
www.cotswoldclubhouse.co.uk
f t i

Cotswold Clubhouse is a wonderful family activity centre based in Bourton-on-the-Water.

With an attractive 3 tier soft play frame for children up to 11 years, and toddler area for the little ones, it is a great place to go whatever the weather.

The Clubhouse Café sits next to the play area, so you can relax and enjoy a quality barista made coffee, home-made cake or a freshly prepared meal, whilst keeping an eye on things.

A fantastic party venue, where children have the choice of a soft play, gymnastics, NERF or pumper party! With a range of package options, there is something for most budgets. Cotswold Clubhouse is designed to bring fun for all and is always bringing new events and activities to keep things exciting.



Cotswold Motoring Museum & Toy Collection

Bourton-on-the-Water GL54 2BY
Tel 01451 821255
www.cotswoldmotoringmuseum.co.uk
f t i

Nestled in the quaint and picturesque village of Bourton-on-the-Water, you'll discover seven galleries packed with classic and vintage cars, caravans, motorcycles, original enamel signs and an intriguing collection of motoring curiosities. The museum is home to TV's car superhero *Brum*, there's even a digital *Brum* trail you can take using your smart phone! Visit this museum for an enchanting experience the entire family will enjoy.



Cotswold Pottery

Bourton-on-the-Water GL54 2DN
Tel 01451 820173
www.cotswoldpottery.co.uk
i

The Cotswold Pottery is a small family-run studio created in 1973 by John & Jude Jelfs. Our ceramic pieces are all made here entirely by hand.

The Cotswold hills are a rich source of minerals which are ideal for use in our glazes, especially clays

and limestone which we combine with woodash. Over the forty years since we started, our work has evolved individually and has been exhibited worldwide at leading galleries.

In our showroom, here in Bourton-on-the-Water, a wide range of work is always available – from pots for food to more individual, one-off pieces.

Due to the small size of our working space, we regret that the studio is not open to the public.

The showroom is open throughout the year.



The Cotswold Perfumery

Bourton-on-the-Water GL54 2BU
Tel 01451 820698
www.cotswold-perfumery.co.uk
f t i

Welcome to the fascinating world of perfumery. We have been making world-renowned perfume for over 50 years and this is an opportunity to share our expert knowledge and skills with you. Our perfume

making courses and workshops run throughout the year. If you're visiting Bourton, why not treat yourself to one of our fragrances from the shop.



The Dragonfly Maze

Bourton-on-the-Water GL54 2BN
f

A traditional yew hedge maze but with a twist! At The Dragonfly Maze, instead of simply trying to find your way to the centre you have to find 14 clues dotted around our pathways. Only then will you be able to discover the Golden Dragonfly hidden inside the ornate central pavilion.

For any enquiries please contact us at info@thedragonflymaze.com



Greystones Farm - Gloucestershire Wildlife Trust

Bourton-on-the-Water GL54 2EN

Tel 01452 383333

www.gloucestershirowildlifetrust.co.uk



wildflower meadows, the meandering River Eye teeming with wildlife, and a replica Iron Age roundhouse over six metres tall.

At first glance Greystones Farm appears as quiet sloping fields. However, on closer inspection, a remarkable ancient and vivid landscape is revealed through stories about wildlife, farming and our ancestors. Follow walking routes to discover



Hartwells Cotswold Cycle Hire

Bourton-on-the-Water GL54 2AJ

Tel 01451 820405

www.hartwellscotswoldcyclehire.uk



We have a fleet of over 50 cycles some of which have child seats, 'tag-alongs' and one covered trailer. All our suggested routes are easy to follow and avoid major roads. We provide maps for a 'Half Day Tour' which is a circular route passing through several typical Cotswold villages. Or just hire a bike for a day or more.



The Model Village

Bourton-on-the-Water GL54 2AF

Tel 01451 820467

www.themodelvillage.com



The only Grade II listed model village in the country. A one-ninth scale replica of the beautiful village of Bourton-on-the-Water built in local Cotswold stone. Walk alongside the River Windrush and cross it's miniature bridges.

In The Model Village you become a giant as you tower above the miniature stone houses. You can enjoy the miniature gardens complete with flowers and miniature trees.

All the historic buildings from the heart of the village are here, listen to the choirs singing in the churches, investigate the local shops and find the model of The Model Village!

Broadway

This picture postcard village is nestled at the foot of the rolling Cotswold Hills. As its name suggests, Broadway is dominated by a wide, tree-lined street with ancient honey-coloured buildings. Take your time and browse the length of the high street which is filled with gift shops, art galleries, antiques shops, restaurants and tearooms.

Don't miss the Gordon Russell Design Museum, which celebrates the work of the renowned 20th century furniture designer, or the Broadway Museum and Art Gallery where you can gain an insight into the history of the village and its cultural heritage. However, no visit to the area is complete without a visit to Broadway Tower, an iconic viewpoint overlooking many counties.

There's so much to do in and around Broadway that it makes the perfect place to base your Cotswolds break – and it has accommodation to suit all budgets and tastes.

www.cotswolds.com/Broadway



All images © Emma Lathwood, The Picture Taker



All Things Wild Nature Centre

Honeybourne, Near Evesham WR11 7QZ

Tel 01386 833083

www.allthingswild.co.uk



A fantastic year-round family attraction, comprising of animals, dinosaurs, soft play and much more to discover. With plenty of activities both indoor and outdoor, to keep all ages entertained whatever the weather!



Bloomery

Farncombe Estate WR12 7LJ

Tel 01386 854185

www.bloomery.co.uk



Have you ever wanted to create beautiful arrangements using homegrown cut flowers? At our light, bright and airy floral studio near Broadway, we run interactive floristry workshops where you can get creative, have a wonderful time and take home your very own handmade arrangement.



Broadway Tower

Broadway WR12 7LB
Tel 01386 852390
www.broadwaytower.co.uk
f @

Set on an ancient beacon site, Broadway Tower was built for the 6th Earl of Coventry in 1798. Visitors today can explore this architectural gem set in a stunning location.

Three museum floors illustrate the Tower's colourful history. Discover more about Sir Thomas Phillipps, renowned 19th century book-collector; William Morris, well-known designer and founder of the British Arts and Crafts movement and how Royal Observer Corps officers tracked enemy aircraft from the Tower roof during WWII. Stand on the roof of Broadway Tower – the highest viewpoint of the Cotswolds – and experience some of the best panoramic views in the country. Tours of the nearby secret nuclear bunker run at weekends in the summer. Don't leave without saying 'hello' to our Red Deer and rounding off a visit with a welcome cuppa in the Morris and Brown café.



Broadway Museum and Art Gallery

Broadway WR12 7DP
Tel 01386 859047
www.broadwaymuseum.org.uk
f @

Step into Broadway's rich and colourful history housed in a beautiful former coaching inn. Admire our stunning collection of medieval furniture, our delightful cabinet of curiosities and visit Broadway's fascinating Artists' Colony.

Cotswold Lavender

Snowhill, Broadway WR12 7JY
Tel 01386 854821
www.cotswoldlavender.co.uk
f @

Cotswold Lavender is based on a third generation family farm set in the heart of the beautiful Cotswold hills overlooking Broadway and the Vale of Evesham.

Visit the rolling lavender fields and enjoy the breathtaking scenery. Bring a picnic and enjoy a day out in the fresh air. Our pop-up shop serves drinks, snacks and ice creams along with our fabulous range of lavender gifts.

Please see our website for opening times.





Gordon Russell Design Museum

Broadway WR12 7AP
Tel 01386 854695
www.gordonrusselldesignmuseum.org
f t i

Explore the fascinating world of 20th century furniture design, from Arts and Crafts cabinetmaking, to 1930s Modernism, the Festival of Britain, and beyond.

The museum shop brings the story up to the present day featuring crafts, gifts and homewares by contemporary designer-makers.

Honeybourne Pottery

Honeybourne WR11 7PQ
Tel 07900 208550
www.honeybournepottery.co.uk
f t i

Honeybourne Pottery is a family business run by potter's Alan & Annabel Cusack. They specialise in both wheel-thrown and slab-built pieces, creating functional handmade tableware for their range Cusack Ceramics, which they sell online and from their studio in Honeybourne. When the couple are not busy making their own designs, they teach potter's wheel classes catering for individuals, families and groups; suitable for complete beginners to those with more experience. The studio and tranquil setting create a calm space away from the stresses of the outside world, where people can escape for a few mindful hours learning about the beauty of clay.



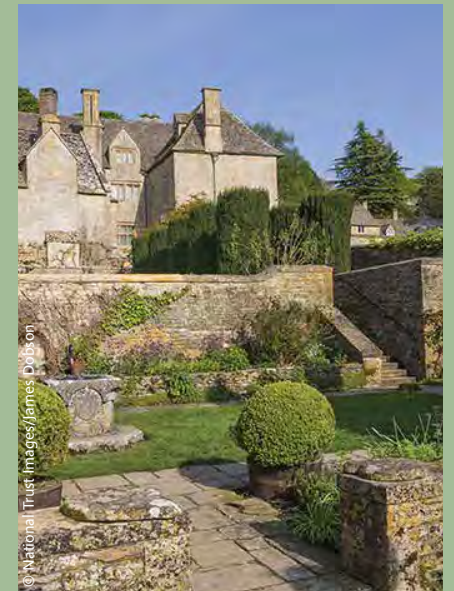
Snowhill Manor

Snowhill, near Broadway WR12 7JU
Tel 01386 852410
www.nationaltrust.org.uk/snowhill-manor-and-garden
f t i

An Aladdin's Cave, not a museum; a home for Charles Wade's fascinating treasures, reflecting his passion for craftsmanship, colour and design.

With a sense of fun and theatre, he took great pleasure in turning his home into a stage for these varied and sometimes unusual finds.

Next to the manor house is the small cottage where Charles Wade lived. Both the manor house and cottage are surrounded by an intimate Arts and Crafts terraced garden where he created 'different courts for different moods'.



Further Afield

The Cotswolds is an excellent base to stay and discover some of Britain's other famous towns and cities.

Gloucester boasts a wealth of fine, ancient buildings and monuments including the breath-taking Gloucester Cathedral. Explore the city's history at its wonderful museums or on a city tour. A few minutes walk from the city centre is the dramatic setting of the Victorian docks, home to Gloucester Quays and a mix of museums and activities.
www.visitgloucester.co.uk

The **Forest of Dean and Wye Valley** is located across the River Severn. Here you will find a different landscape to discover and enjoy, with a host of great activities and entertainment.

www.visitdeanwey.co.uk

An important historic city, **Oxford** is renowned for its university colleges, Botanic Garden, museums and skyline of dreaming spires.

www.experienceoxfordshire.org

Stratford-upon-Avon, forever associated with Shakespeare, is full of world-famous attractions and the RSC.

www.shakespeares-england.co.uk



Forest of Dean and Wye Valley



Stratford-upon-Avon



Gloucester

All images © Angelo Hornack; Duncan Powell; Shakespeare's England



British Motor Museum

Gaydon, Near Warwick CV35 0BJ

Tel 01926 641188

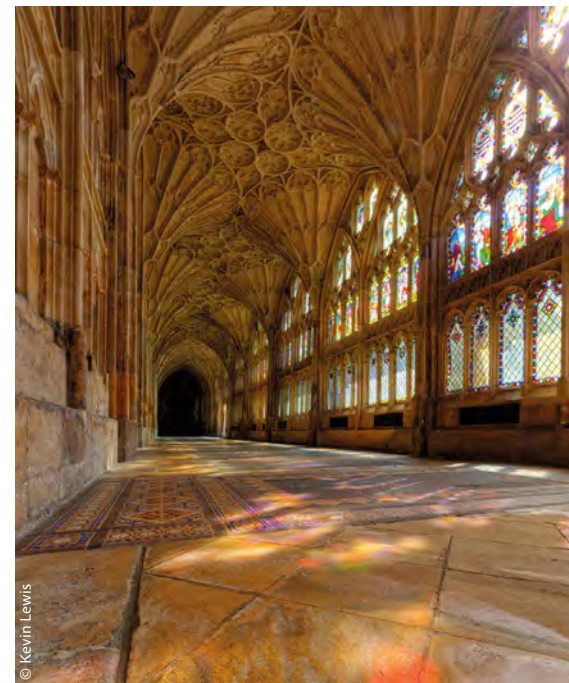
www.britishmotormuseum.co.uk



Explore the British Motor Museum – home to the world's largest collection of historic British cars, from the very first Land Rover to Lady Penelope's FAB1 – over 400 cars to discover.

Check our website for school holiday activities and special weekend motoring events.

Onsite café, outdoor play area, family activities, free parking. Pre-booking essential. Fun for all the family whatever the weather!



© Kevin Lewis

Gloucester Cathedral

Gloucester GL1 2LX

Tel 01452 528095

www.gloucestercathedral.org.uk



Explore 1,000 years of history in this glorious, sacred space. The beautiful fan-vaulted Cloisters and Great East Window are national treasures along with the tomb of King Edward II. Family activities include the Whispering Gallery, Interactive Tribune Gallery, Children's Trails and the chance to see where *Harry Potter*, *Mary Queen of Scots*, *Hollow Crown*, *Wolf Hall* and *Sherlock* were filmed. Admission free (donation requested).

Highnam Court

Highnam, Gloucester GL2 8DP
Tel 01452 308251
www.highnamcourt.co.uk

Over the last 25 years the gardens have been lovingly restored to their former glory with many new additions being made to complement and enhance the original design. Highnam Court Gardens are open to the general public for the National Gardens Scheme on selected days throughout the year. Private visits can be arranged for parties of 20 or more at other times.



National Waterways Museum Gloucester

Gloucester GL1 2EH
Tel 01452 318212
www.canalrivertrust.org.uk
f t i

& Sharpness Canal. With fun, interactive exhibits, café and museum shop you'll discover the stories of the communities that lived and continue to thrive here.

Three floors of a Grade II listed Victorian grain warehouse house displays and galleries, which chart the story of Britain's waterways and the fascinating 200-year old history of the docks and the Gloucester



Museum of Gloucester

Gloucester GL1 1HP
Tel 01452 396131
www.museumofgloucester.co.uk
f t i

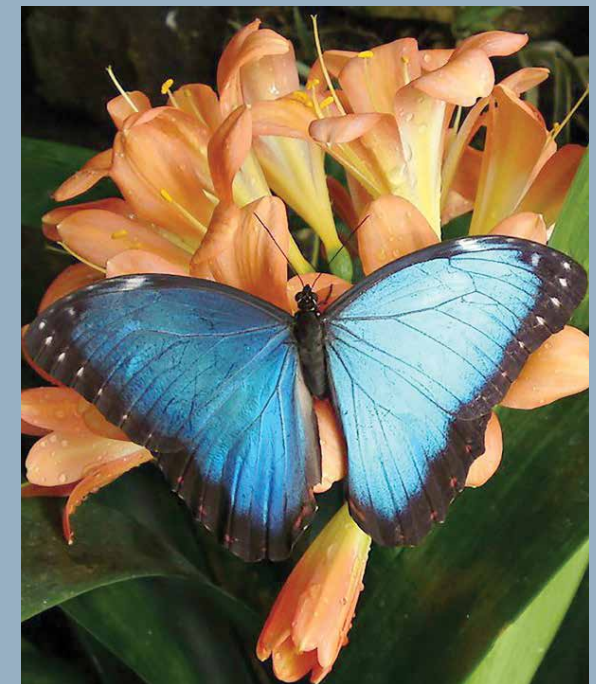
The Museum of Gloucester tells the story of the city's origins as a Roman settlement and its subsequent development through the Dark Ages and medieval period. This fine Victorian building also has a significant collection of art including paintings by Richard Wilson, Thomas Gainsborough, John Atkinson Grimshaw and Thomas Dibdin. The Archaeology collection includes the world-famous Birdlip Mirror, impressive Roman tombstones and the Gloucester Tables Set, the oldest complete backgammon set in the world.

The museum has ever-changing exhibitions and events, so keep your eye open for these and much, much more.

Stratford-upon-Avon Butterfly Farm

Stratford-upon-Avon CV37 7LS
Tel 01789 299288
www.butterflyfarm.co.uk
f t i

Come rain or shine, walk amongst some of the worlds' most beautiful butterflies in a unique rainforest environment of tropical blossom with splashing waterfalls and fishfilled pools. Discover the fascinating link the Butterfly Farm has to the rainforests of Belize and the Maya, an ancient rainforest civilisation, whose artefacts have been replicated and are now on display throughout the Farm.





Upton House & Gardens

Near Banbury OX15 6HT

Tel 01295 670266

www.nationaltrust.org.uk/uptonhouse



In 1927 Lord and Lady Bearsted extensively remodelled Upton House to create the perfect country residence for their family. Alongside spaces to showcase a world-class art and porcelain collection, including works by Bosch, Stubbs and

El Greco, the gardens were altered to make the most of their position. Located on the edge of an ice-age valley, the gardens drop away from the south lawn down towards the Mirror Pool. They give you the opportunity to step away from busy lives as you meander past the borders, each of which has been planted to be at its seasonal best. If there is a particular piece of the collection you would like to see please contact us ahead of your visit as not all items are on permanent display.



Westbury Court Garden

Westbury-on-Severn GL14 1PD

Tel 01452 76046

www.nationaltrust.org.uk/westbury-court-garden



Westbury Court Garden was originally laid out between 1696 and 1705, and is the only restored Dutch style water garden in the country. Visiting us feels like you have stepped back in time to a place of elegance and calm.

Here you'll find straight canals reflecting the sky, clipped hedges, ornate garden buildings and old-fashioned orchards. There are 17th century vegetable plots and old varieties of fruit trees.

Bath

A World Heritage Site with a magnificent setting; all routes from the Cotswolds descend spectacularly into the broad valley of the River Avon. Bath is home to some of the most impressive architectural sights in the world such as the Royal Crescent, the Circus and Pulteney Bridge.

At the heart of the city centre, next to Bath's imposing Abbey, are the Roman Baths and its museum, which gives a fascinating insight into the original bathing complex and the great Roman temple of Sulis Minerva. Above the museum in the 18th century Pump Room you can taste the waters or enjoy a meal. Bath has a wide variety of museums and galleries, festivals, events and visitors can once again relax in the waters at Thermae Bath Spa, with its open-air rooftop pool.

www.visitbath.co.uk





Bailey Balloons

Bristol
Tel 01275 774252
www.baileyballoons.co.uk
f

Our passengers are required to meet at a designated time and place after calling a special pre-flight check-in line. Upon arrival, passengers meet their pilot and crew for the flight and are invited to get involved with setting up the balloon for its flight. Once the balloon has been prepared and safety checks have been done, the pilot will activate the burner and produce big flames which will start to make the balloon rise, the wind is the determining factor of where the balloon will go. Once you're in the air there is no feeling of movement, total peacefulness. On landing the balloon is packed away and chilled Champagne is served.



The Cotswolds by Car

Bath BA1 1XB
Tel 07776 033560
www.cityofbathguides.com
f t i

This full nine hour tour will show the Cotswolds at its very best.

This enjoyable route takes in the highlights of the Cotswolds, including Tetbury and its royal connections; Cirencester and its Roman heritage;

Bourton-on-the-Water, known as 'the Venice of the Cotswolds'; the idyllic village of Lower Slaughter; historic Stow-on-the-Wold; Burford, one of Oxfordshire's most attractive towns, and the beautiful villages of Bibury and Castle Combe.

For over 20 years I have enjoyed guiding visitors around Bath and the Cotswolds and sharing my knowledge of this stunning area.

Always entertaining, never dull!



Bath Insider Tours

Tel 07772 038233
www.bathinsidertours.co.uk
f i

Located in the city of Bath, Bath Insider Tours offers private guided tours for visitors to Bath. All of the tours are run by Daniel who was born and grew up in Bath giving you the chance to meet and talk to someone from the area.

Using his insider knowledge each tour has been

specially designed to give you an interesting insight into the area and create wonderful memories from your visit.



Dyrham Park

Dyrham SN14 8HY
Tel 0117 937 2501
www.nationaltrust.org.uk/dyrhampark
f t i

Ancient parkland with a 17th century house full of Dutch-inspired delights and formal garden situated just 8 miles north of Bath and 16 miles east of Bristol. Run by the National Trust, there is a tearoom and shop as well as daily guided tours of the park, garden and beyond. Please check the website for booking information and latest updates.



Fashion Museum Bath

Bath BA1 2QH
Tel 01225 477789
www.fashionmuseum.co.uk
f t i

A must-see for every fashion lover, the Fashion Museum is home to one of the world's leading collections of historic and fashionable dress. You'll see everything from sumptuous Georgian gowns to spectacular outfits by some of today's top

designers. The Fashion Museum was founded as the Museum of Costume in 1963, when designer, collector and historian Doris Langley Moore gave her private collection of fashionable dress to the City of Bath.

Today, the outstanding collection includes more than 100,000 objects dating from the 16th century to the present day. Changing displays chronicle the story of fashionable dress.

The museum is housed in the Assembly Rooms, Bath's most magnificent Georgian building.



The Roman Baths

Bath BA1 1LZ
Tel 01225 477785
www.romanbaths.co.uk
f t i

The Roman Baths is located at the heart of the World Heritage City of Bath. Here, the Romans built a magnificent temple and bathing complex on the site of Britain's only hot spring, which still flows with naturally hot water.

Walk around the steaming Great Bath where people bathed nearly 2,000 years ago, see the ruins of the temple of Minerva where Roman worshippers gathered, and explore the fascinating Roman Baths museum.

Costumed characters bring to life the stories of past inhabitants. You might meet a Roman lady called Flavia, slave girl Apulia, stonemasons Sulinus and Brucetus, or a travelling merchant named Peregrinus.



Thermae Bath Spa

Bath BA1 1SJ
Tel 01225 33 1234
www.thermaebathspa.com
f t i

In the heart of the World Heritage Site of Bath, Thermae Bath Spa is a remarkable combination of 'old and new' where you can bathe in the UK's only naturally warm, mineral-rich waters as the Celts and Romans did over 2,000 years ago.

By day and by night, you can relax in the indoor Minerva Bath and enjoy spectacular views over the city of Bath from the open-air rooftop pool. Additionally, you can choose from a selection of spa packages and treatments.

The Springs Restaurant serves a selection of freshly prepared meals, light bites and interesting drinks throughout the day including the popular Twilight Package.

History will never have felt so good!



Savouring Bath

Bath BA1 1SU
Tel 01225 425843
www.savouringbath.com
f t i

Discover this top UK culinary destination by using your taste buds, while strolling through its elegant 18th century streets and alleyways.

It's a truly unique way to experience the UK's UNESCO World Heritage City of Bath while sampling the best produce from the city's best artisan culinary outlets. Your local guide will lead you from ancient pubs to artisanal coffees, breweries to bread, and farmers' markets to falafels, where residents and visitors, alike, will discover the top food hot spots of Bath. All tastings are included, along with plenty of dining, drinking and shopping tips.



Victoria Art Gallery

Bath BA2 4AT
Tel 01225 477233
www.victoriagal.org.uk
f t i

Opened in 1900, the Victoria Art Gallery boasts an outstanding collection of paintings, sculptures and decorative arts. The gallery is located in the centre of Bath, near the famous Pulteney Bridge.

There are more than 1,500 artworks on show, spanning the 15th century to the present day, including many by artists who have lived and worked in the Bath area, such as Thomas Gainsborough and Walter Sickert.

Entry to the permanent displays is free.





Find out more at
www.cotswolds.com

